



[Go to Product page](#)

Datasheet for ABIN515007
anti-DLX2 antibody (AA 1-110)

4 Images

Overview

| | |
|----------------------|---|
| Quantity: | 100 µg |
| Target: | DLX2 |
| Binding Specificity: | AA 1-110 |
| Reactivity: | Human |
| Host: | Mouse |
| Clonality: | Monoclonal |
| Conjugate: | This DLX2 antibody is un-conjugated |
| Application: | Western Blotting (WB), ELISA, Immunohistochemistry (Paraffin-embedded Sections) (IHC (p)) |

Product Details

| | |
|-------------------|--|
| Purpose: | Mouse monoclonal antibody raised against a partial recombinant DLX2. |
| Immunogen: | DLX2 (NP_004396.1, 1 a.a. ~ 110 a.a) partial recombinant protein with GST tag. MW of the GST tag alone is 26 KDa. |
| Sequence: | MTGVFDSLVA DMHSTQIAAS STYHQHQPP SGGGAGPGGN SSSSSSLHKP QESPTLPVST ATDSSYYTNQ QHPAGGGGGG GSPYAHMGSY QYQASGLNNV PYSAKSSYDL |
| Clone: | 2H2 |
| Isotype: | IgG2a |
| Cross-Reactivity: | Human, Mouse |
| Characteristics: | Antibody Reactive Against Recombinant Protein. |

Target Details

| | |
|-------------------|---|
| Target: | DLX2 |
| Alternative Name: | DLX2 (DLX2 Products) |
| Background: | Full Gene Name: distal-less homeobox 2 Synonyms: TES-1, TES1 |
| Gene ID: | 1746 |
| NCBI Accession: | NM_004405 |

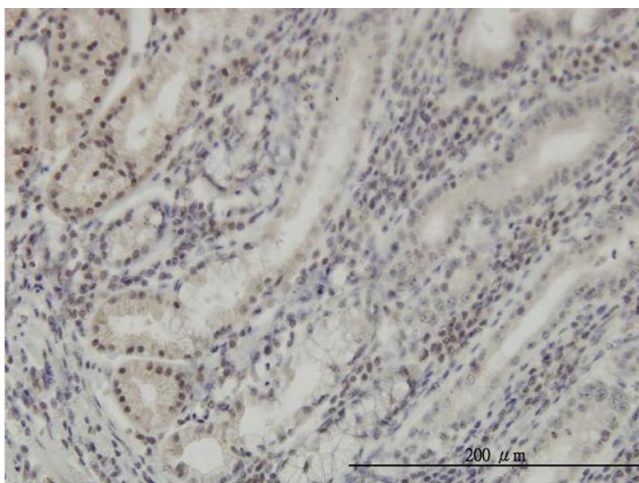
Application Details

| | |
|--------------------|--|
| Application Notes: | Optimal working dilution should be determined by the investigator. |
| Restrictions: | For Research Use only |

Handling

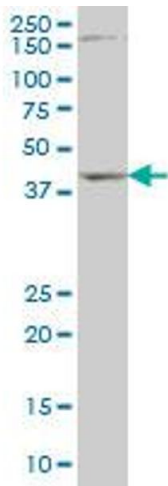
| | |
|------------------|--|
| Buffer: | In 1x PBS, pH 7.4 |
| Handling Advice: | Aliquot to avoid repeated freezing and thawing. |
| Storage: | -20 °C |
| Storage Comment: | Store at -20°C or lower. Aliquot to avoid repeated freezing and thawing. |

Images



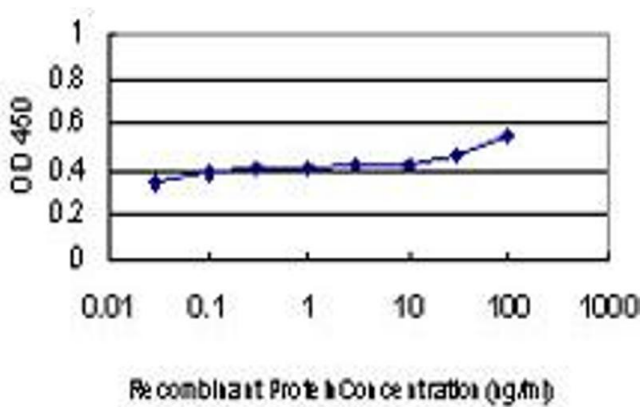
Immunostaining

Image 1. Immunoperoxidase of monoclonal antibody to DLX2 on formalin-fixed paraffin-embedded human stomach. [antibody concentration 5 ug/ml]



Western Blotting

Image 2. DLX2 monoclonal antibody (M01), clone 2H2 Western Blot analysis of DLX2 expression in NIH/3T3 .



ELISA

Image 3. Detection limit for recombinant GST tagged DLX2 is approximately 0.03ng/ml as a capture antibody.

Please check the [product details page](#) for more images. Overall 4 images are available for ABIN515007.