



[Go to Product page](#)

Datasheet for ABIN515010  
**anti-DLX2 antibody (AA 1-124)**

3 Images

Overview

Quantity:	100 µg
Target:	DLX2
Binding Specificity:	AA 1-124
Reactivity:	Human
Host:	Mouse
Clonality:	Monoclonal
Conjugate:	This DLX2 antibody is un-conjugated
Application:	Western Blotting (WB), ELISA, Immunofluorescence (IF)

Product Details

Purpose:	Mouse monoclonal antibody raised against a full length recombinant DLX2.
Immunogen:	DLX2 (NP_004396, 1 a.a. ~ 124 a.a) full-length recombinant protein with GST tag. MW of the GST tag alone is 26 KDa.
Sequence:	MTGVFDSLVA DMHSTQIAAS STYHQHQPP SGGGAGPGGN SSSSSSLHKP QESPTLPVST ATDSSYYTNQ QHPAGGGGGG GSPYAHMGSY QYQASGLNNV PYSAKSSYDL GYTAAYTSYA PYGT
Clone:	3H3
Isotype:	IgG2a
Cross-Reactivity:	Human
Characteristics:	Antibody Reactive Against Recombinant Protein.

## Target Details

Target:	DLX2
Alternative Name:	DLX2 ( <a href="#">DLX2 Products</a> )
Background:	Full Gene Name: distal-less homeobox 2 Synonyms: TES-1, TES1
Gene ID:	1746
NCBI Accession:	<a href="#">NM_004405</a>

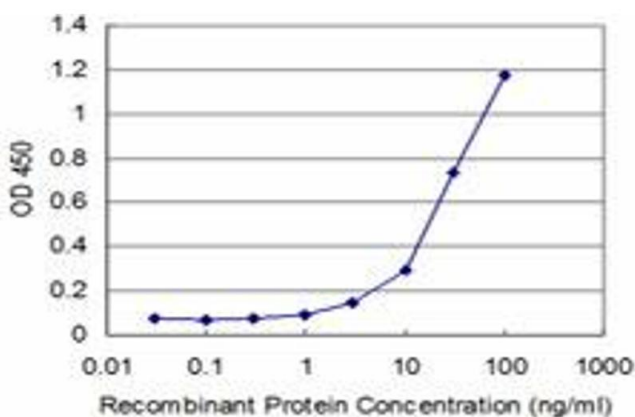
## Application Details

Application Notes:	Optimal working dilution should be determined by the investigator.
Restrictions:	For Research Use only

## Handling

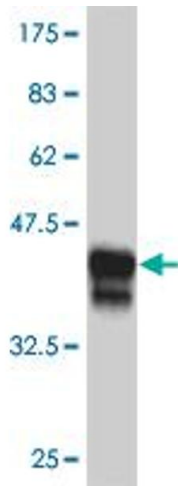
Buffer:	In 1x PBS, pH 7.4
Handling Advice:	Aliquot to avoid repeated freezing and thawing.
Storage:	-20 °C
Storage Comment:	Store at -20°C or lower. Aliquot to avoid repeated freezing and thawing.

## Images



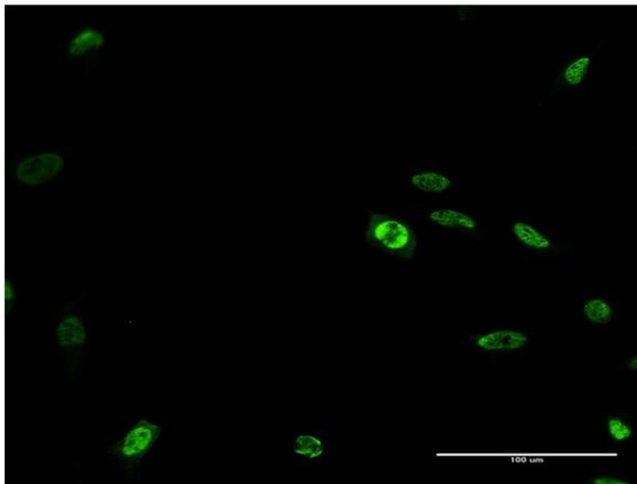
### ELISA

**Image 1.** Detection limit for recombinant GST tagged DLX2 is approximately 3ng/ml as a capture antibody.



### Western Blotting

**Image 2.** Western Blot detection against Immunogen (39.38 KDa) .



### Immunofluorescence

**Image 3.** Immunofluorescence of monoclonal antibody to DLX2 on HeLa cell. [antibody concentration 10 ug/ml]