



[Go to Product page](#)

Datasheet for ABIN515012  
**anti-DLX3 antibody (AA 1-287)**

2 Images

Overview

Quantity:	100 µg
Target:	DLX3
Binding Specificity:	AA 1-287
Reactivity:	Human
Host:	Rabbit
Clonality:	Polyclonal
Conjugate:	This DLX3 antibody is un-conjugated
Application:	Western Blotting (WB)

Product Details

Purpose:	Rabbit polyclonal antibody raised against a full-length human DLX3 protein.
Immunogen:	DLX3 (NP_005211.1, 1 a.a. ~ 287 a.a) full-length human protein.
Sequence:	MSGSFDRKLS SILTDISSL SCHAGSKDSP TLPESVTDL GYYSAPQHDY YSGQPYGQTV NPPTYHHQFN LNLAGTGAY SPKSEYTYGA SYRQYGAYRE QPLPAQDPVS VKEEPEAEVR MVNGKPKKVR KPRTIYSSYQ LAALQRRFQK AQYLALPERA ELAAQLGLTQ TQVKIWFQNR RSKFKKLYKN GEVPLEHSPN NSDSMACNSP PSPALWDTSS HSTPAPARSQ LPPPLPYSAS PSYLDPTNS WYHAQNLSP HLQQPPQPA TLHHASPGPP PNPQAVY
Cross-Reactivity:	Human, Mouse
Characteristics:	Antibody reactive against mammalian transfected lysate.

## Target Details

Target:	DLX3
Alternative Name:	DLX3 (DLX3 Products)
Background:	Full Gene Name: distal-less homeobox 3 Synonyms: AI4,TDO
Gene ID:	1747
NCBI Accession:	<a href="#">NM_005220</a>

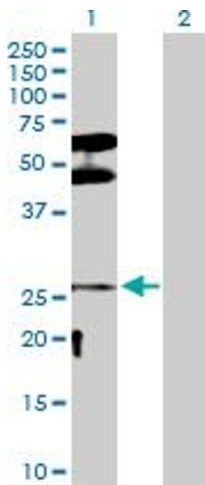
## Application Details

Application Notes:	Optimal working dilution should be determined by the investigator.
Restrictions:	For Research Use only

## Handling

Buffer:	In 1x PBS, pH 7.4
Handling Advice:	Aliquot to avoid repeated freezing and thawing.
Storage:	-20 °C
Storage Comment:	Store at -20°C or lower. Aliquot to avoid repeated freezing and thawing.

## Images

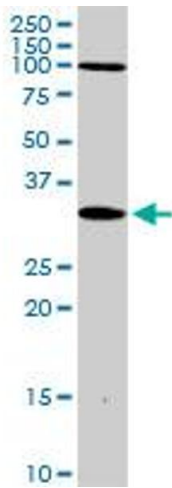


### Western Blotting

**Image 1.** Western Blot analysis of DLX3 expression in transfected 293T cell line by DLX3 MaxPab polyclonal antibody.

Lane 1: DLX3 transfected lysate(31.70 KDa).

Lane 2: Non-transfected lysate.



### Western Blotting

**Image 2.** DLX3 MaxPab rabbit polyclonal antibody. Western Blot analysis of DLX3 expression in mouse brain.