



[Go to Product page](#)

Datasheet for ABIN515024
anti-DLX6 antibody (AA 1-175)

2 Images

Overview

Quantity:	100 µg
Target:	DLX6
Binding Specificity:	AA 1-175
Reactivity:	Human
Host:	Rabbit
Clonality:	Polyclonal
Conjugate:	This DLX6 antibody is un-conjugated
Application:	Western Blotting (WB)

Product Details

Purpose:	Rabbit polyclonal antibody raised against a full-length human DLX6 protein.
Immunogen:	DLX6 (AAH69363.1, 1 a.a. ~ 175 a.a) full-length human protein.
Sequence:	MSHSQHSPYL QSYHNSSAAA QTRGDDTDQQ KTTVIENGEI RFNGKGKKIR KPRTIYSSLQ LQALNHRFQQ TQYLALPERA ELAASLGLTQ TQVKIWFQNK RSKFKLLKQ GSNPHESDPL QGSAALSPRS PALPPVWDVS ASAKGVSMPP NSYMPGYSHW YSSPHQDTMQ RPQMM
Cross-Reactivity:	Human
Characteristics:	Antibody reactive against mammalian transfected lysate.

Target Details

Target:	DLX6
---------	------

Target Details

Alternative Name:	DLX6 (DLX6 Products)
Background:	Full Gene Name: distal-less homeobox 6 Synonyms: MGC125282,MGC125283,MGC125284,MGC125285
Gene ID:	1750

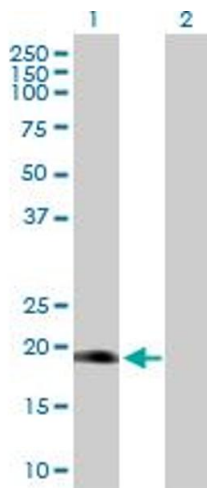
Application Details

Application Notes:	Optimal working dilution should be determined by the investigator.
Restrictions:	For Research Use only

Handling

Buffer:	In 1x PBS, pH 7.4
Handling Advice:	Aliquot to avoid repeated freezing and thawing.
Storage:	-20 °C
Storage Comment:	Store at -20°C or lower. Aliquot to avoid repeated freezing and thawing.

Images

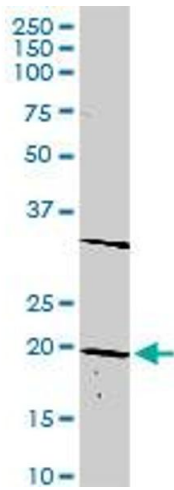


Western Blotting

Image 1. Western Blot analysis of DLX6 expression in transfected 293T cell line by DLX6 MaxPab polyclonal antibody.

Lane 1: DLX6 transfected lysate(19.70 KDa).

Lane 2: Non-transfected lysate.



Western Blotting

Image 2. DLX6 MaxPab rabbit polyclonal antibody. Western Blot analysis of DLX6 expression in human kidney.