



[Go to Product page](#)

Datasheet for ABIN515025
anti-DLX6 antibody (AA 71-160)

3 Images

Overview

Quantity:	100 µg
Target:	DLX6
Binding Specificity:	AA 71-160
Reactivity:	Human
Host:	Mouse
Clonality:	Monoclonal
Conjugate:	This DLX6 antibody is un-conjugated
Application:	Western Blotting (WB), ELISA

Product Details

Purpose:	Mouse monoclonal antibody raised against a partial recombinant DLX6.
Immunogen:	DLX6 (XP_376652, 71 a.a. ~ 160 a.a) partial recombinant protein with GST tag. MW of the GST tag alone is 26 KDa.
Sequence:	PYASGGGNSY NHRSLAAYPY MSHSQHSPYL QSYHNSSAAA QTRGDDTDQQ KTTVIENGEI RFNGKGGKIR KPRTIYSSLQ LQALNHRFQQ
Clone:	2D7
Isotype:	IgG2a
Cross-Reactivity:	Human
Characteristics:	Antibody Reactive Against Recombinant Protein.

Target Details

Target:	DLX6
Alternative Name:	DLX6 (DLX6 Products)
Background:	Full Gene Name: distal-less homeobox 6 Synonyms: MGC125282,MGC125283,MGC125284,MGC125285
Gene ID:	1750
NCBI Accession:	XM_376652

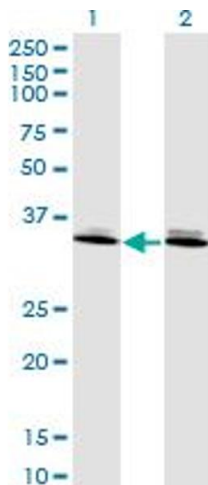
Application Details

Application Notes:	Optimal working dilution should be determined by the investigator.
Restrictions:	For Research Use only

Handling

Buffer:	In 1x PBS, pH 7.4
Handling Advice:	Aliquot to avoid repeated freezing and thawing.
Storage:	-20 °C
Storage Comment:	Store at -20°C or lower. Aliquot to avoid repeated freezing and thawing.

Images

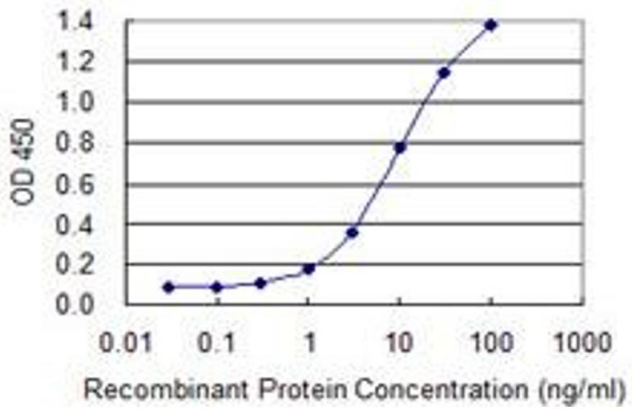


Western Blotting

Image 1. Western Blot analysis of DLX6 expression in transfected 293T cell line by DLX6 monoclonal antibody (M06), clone 2D7.

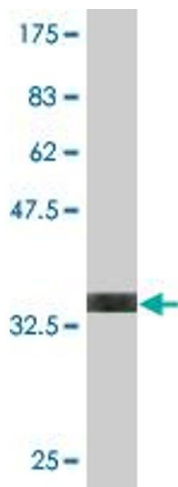
Lane 1: DLX6 transfected lysate(19.708 KDa).

Lane 2: Non-transfected lysate.



ELISA

Image 2. Detection limit for recombinant GST tagged DLX6 is 0.3 ng/ml as a capture antibody.



Western Blotting

Image 3. Western Blot detection against Immunogen (35.64 kDa).