



[Go to Product page](#)

Datasheet for ABIN515026

anti-Dystrophin antibody (AA 1-635)

1 Image

Overview

Quantity:	100 µg
Target:	Dystrophin (DMD)
Binding Specificity:	AA 1-635
Reactivity:	Human
Host:	Rabbit
Clonality:	Polyclonal
Conjugate:	This Dystrophin antibody is un-conjugated
Application:	Western Blotting (WB)

Product Details

Purpose:	Rabbit polyclonal antibody raised against a full-length human DMD protein.
Immunogen:	DMD (NP_004007.1, 1 a.a. ~ 635 a.a) full-length human protein.
Sequence:	MREQLKGHET QTTCWDHPKM TELYQSLADL NNVRFSAVRT AMKLRRQLQA LCLDLLSLSA ACDALDQHNL KQNDQPM DIL QIINCLTTIY DRLEQEHNNL VNVPLCVD MC LNWLLNVYDT GRTGRIRVLS FKTGIISLCK AHLEDKYRYL FKQVASSTGF CDQRRLLGLL HDSIQIPRQL GEVASFGGSN IEPVRSFCFQ FANNKPEIEA ALFLDWMRLE PQSMVWLPVL HRVAAAETAK HQAKCNICKE CPIIGFRYRS LKHFNYDICQ SCFFSGRVAK GHKMHYPMVE YCTPTTSGED VRDFAKVLKN KFRTKRYFAK HPRMGYLPVQ TVLEGDNMET PVTLINFWPV DSAPASSPQL SHDDTHSRIE HYASRLAEME NSNGSYL NDS ISPNESIDDE HLLIQHYCQS LNQDSPLSQP RSPAQILISL ESEERGELER ILADLEENR NLQAEYDRK QQHEHKGLSP LPSPPEMMPT SPQSPRDAEL IAEAKLLRQH KGRLEARMQI LEDH NKQLES QLHRLRQLLE QPQAEAKVNG TTVSSPSTSL QRSDSSQPML LRVVGSQTSD SMGEEDLLSP PQDTSTGLEE VMEQLNNSFP

Product Details

SSRGHNVGSL FHMADDLGRA MESLVSVM TD EEGAE

Cross-Reactivity: Human

Characteristics: Antibody reactive against mammalian transfected lysate.

Target Details

Target: Dystrophin (DMD)

Alternative Name: DMD ([DMD Products](#))

Background: Full Gene Name: dystrophin

Synonyms:

BMD,CMD3B,DXS142,DXS164,DXS206,DXS230,DXS239,DXS268,DXS269,DXS270,DXS272

Gene ID: 1756

NCBI Accession: [NM_004016](#)

Pathways: [Skeletal Muscle Fiber Development](#)

Application Details

Application Notes: Optimal working dilution should be determined by the investigator.

Restrictions: For Research Use only

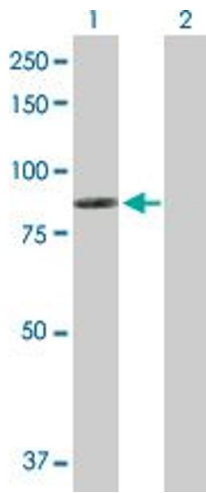
Handling

Buffer: In 1x PBS, pH 7.4

Handling Advice: Aliquot to avoid repeated freezing and thawing.

Storage: -20 °C

Storage Comment: Store at -20°C or lower. Aliquot to avoid repeated freezing and thawing.



Western Blotting

Image 1. Western Blot analysis of DMD expression in transfected 293T cell line by DMD MaxPab polyclonal antibody.

Lane 1: DMD transfected lysate(72.20 KDa).

Lane 2: Non-transfected lysate.