



[Go to Product page](#)

Datasheet for ABIN515037
anti-DNASE1 antibody (AA 1-282)

1 Image

Overview

Quantity:	50 µg
Target:	DNASE1
Binding Specificity:	AA 1-282
Reactivity:	Human
Host:	Mouse
Clonality:	Polyclonal
Conjugate:	This DNASE1 antibody is un-conjugated
Application:	Western Blotting (WB)

Product Details

Purpose:	Mouse polyclonal antibody raised against a full-length human DNASE1 protein.
Immunogen:	DNASE1 (NP_005214, 1 a.a. ~ 282 a.a) full-length human protein.
Sequence:	MRGMKLLGAL LALAALLQGA VSLKIAAFNI QTFGETKMSN ATLVSYIVQI LSRVDIALVQ EVRDShLTAV GKLLDNLNqD APDTYHYVVS EPLGRNSYKE RYLFVYRPDQ VSAVDSYYYY DGCEPCGNDT FNREPAIVRF FSRFTEVREF AIVPLHAAPG DAVAEIDALY DVYLDVQEKW GLEDVMLMGD FNAGCSYVRP SQWSSIRLWT SPTFQWLIPD SADTTATPTH CAYDRIVVAG MLLRGAVVPD SALPFNFQAA YGLSDQLAQA ISDHYPVEVM LK
Cross-Reactivity:	Human
Characteristics:	Antibody reactive against mammalian transfected lysate.

Target Details

Target:	DNASE1
Alternative Name:	DNASE1 (DNASE1 Products)
Background:	Full Gene Name: deoxyribonuclease I Synonyms: DKFZp686H0155,DNL1,DRNI,FLJ38093,FLJ44902
Gene ID:	1773
NCBI Accession:	NM_005223

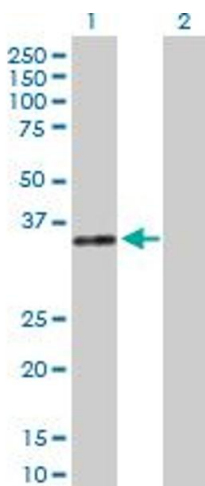
Application Details

Application Notes:	Optimal working dilution should be determined by the investigator.
Restrictions:	For Research Use only

Handling

Buffer:	In 1x PBS, pH 7.4
Handling Advice:	Aliquot to avoid repeated freezing and thawing.
Storage:	-20 °C
Storage Comment:	Store at -20°C or lower. Aliquot to avoid repeated freezing and thawing.

Images



Western Blotting

Image 1. Western Blot analysis of DNASE1 expression in transfected 293T cell line by DNASE1 MaxPab polyclonal antibody.

Lane 1: DNASE1 transfected lysate(31.02 KDa).

Lane 2: Non-transfected lysate.