

Datasheet for ABIN515055  
**anti-DOCK2 antibody (AA 1-336)**[Go to Product page](#)

## 1 Image

## Overview

Quantity:	100 µg
Target:	DOCK2
Binding Specificity:	AA 1-336
Reactivity:	Human
Host:	Mouse
Clonality:	Monoclonal
Conjugate:	This DOCK2 antibody is un-conjugated
Application:	ELISA, Proximity Ligation Assay (PLA)

## Product Details

Purpose:	Mouse monoclonal antibody raised against a full length recombinant DOCK2.
Immunogen:	DOCK2 (AAH16996, 1 a.a. ~ 336 a.a) full-length recombinant protein with GST tag. MW of the GST tag alone is 26 KDa.
Sequence:	MCVCAEDGKT LPVAVPIEDM QRIHLRFMFR HRSSLESKDK GEKNFAMSYV KLMKEDGTTL HDGFHDLVVL KGDSKKMEDA SAYLTLPYSR HHVENKGATL SRSSSSVGGL SVSSRDVFSI STLVCSTKLT QNVGLLGLLK WRMKPQLEES MRRLFESINN LMKSQYKTTI LLQVAALKYI PSVLHDVEMV FDAKLLSQLL YEFYTCIPPV KLQKQKVQSM NEIVQSNLFK KQECRDILLP VITKELKELL EQKDDMQHQV LERKYCVELL NSILEVLSYQ DAAFTYHHIQ EIMVQLLRTV NRTVITMGRD HILIGACCNC GFPSSTPHSL IQWLWG
Clone:	2F4
Isotype:	IgG2a

## Product Details

Cross-Reactivity:	Human
Characteristics:	Antibody Reactive Against Recombinant Protein.

## Target Details

Target:	DOCK2
Alternative Name:	DOCK2 ( <a href="#">DOCK2 Products</a> )
Background:	Full Gene Name: dedicator of cytokinesis 2 Synonyms: FLJ46592,KIAA0209
Gene ID:	1794

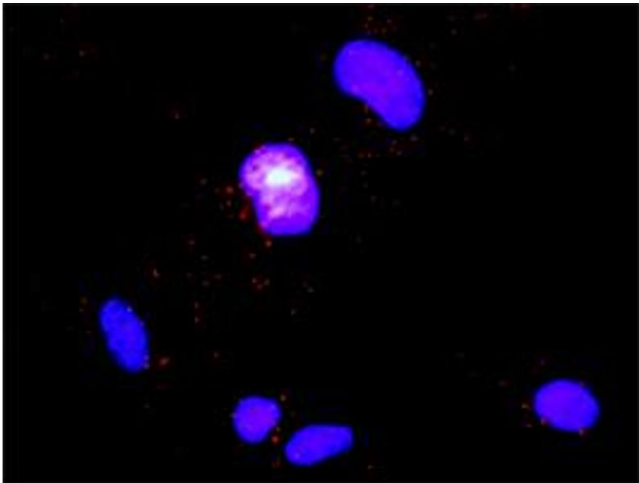
## Application Details

Application Notes:	Optimal working dilution should be determined by the investigator.
Restrictions:	For Research Use only

## Handling

Buffer:	In 1x PBS, pH 7.4
Handling Advice:	Aliquot to avoid repeated freezing and thawing.
Storage:	-20 °C
Storage Comment:	Store at -20°C or lower. Aliquot to avoid repeated freezing and thawing.

## Images



### Proximity Ligation Assay

**Image 1.** Proximity Ligation Analysis of protein-protein interactions between CD247 and DOCK2. HeLa cells were stained with anti-CD247 rabbit purified polyclonal 1:1200 and anti-DOCK2 mouse monoclonal antibody 1:50. Each red dot represents the detection of protein-protein interaction complex, and nuclei were counterstained with DAPI (blue).