



[Go to Product page](#)

Datasheet for ABIN515070

anti-Dopamine d2 Receptor antibody (AA 1-110)

2 Images

1 Publication

Overview

Quantity:	200 µL
Target:	Dopamine d2 Receptor (DRD2)
Binding Specificity:	AA 1-110
Reactivity:	Human
Host:	Mouse
Clonality:	Monoclonal
Conjugate:	This Dopamine d2 Receptor antibody is un-conjugated
Application:	Western Blotting (WB), ELISA

Product Details

Purpose:	Mouse monoclonal antibody raised against a partial recombinant DRD2.
Immunogen:	DRD2 (AAH21195, 1 a.a. ~ 110 a.a) partial recombinant protein with GST tag. MW of the GST tag alone is 26 KDa.
Sequence:	MDPLNLSWYD DDLERQNWSR PFNGSDGKAD RPHYNYATL LTLIAVIVF GNVLVCMAVS REKALQTTTN YLIVSLAVAD LLVATLVMPW VVYLEVVGEW KFSRIHCDIF
Clone:	1B11
Isotype:	IgG2a kappa
Cross-Reactivity:	Human

Target Details

Target:	Dopamine d2 Receptor (DRD2)
Alternative Name:	DRD2 (DRD2 Products)
Background:	Full Gene Name: dopamine receptor D2 Synonyms: D2DR,D2R
Gene ID:	1813
Pathways:	Positive Regulation of Peptide Hormone Secretion , Negative Regulation of Hormone Secretion , cAMP Metabolic Process , Inositol Metabolic Process , Regulation of G-Protein Coupled Receptor Protein Signaling , Feeding Behaviour , Negative Regulation of Transporter Activity , Regulation of long-term Neuronal Synaptic Plasticity

Application Details

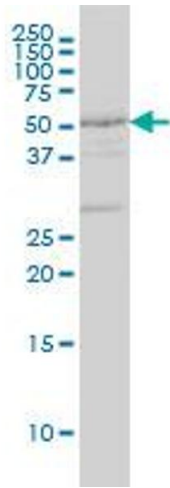
Application Notes:	Optimal working dilution should be determined by the investigator.
Comment:	Product Quality tested by: Antibody Reactive Against Recombinant Protein.
Restrictions:	For Research Use only

Handling

Format:	Liquid
Buffer:	In ascites fluid
Handling Advice:	Aliquot to avoid repeated freezing and thawing.
Storage:	-20 °C
Storage Comment:	Store at -20°C or lower. Aliquot to avoid repeated freezing and thawing.

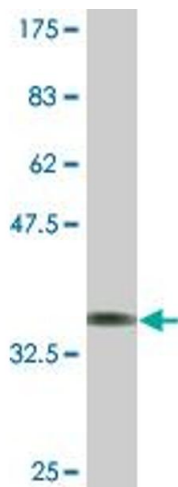
Publications

Product cited in:	Schulz, Leuschen, Fröhlich, Lorenz, Pfeiler, Gleissner, Kremmer, Kessler, Khandoga, Engelmann, Ley, Massberg, Arnold: "Identification of novel downstream targets of platelet glycoprotein VI activation by differential proteome analysis: implications for thrombus formation." in: Blood , Vol. 115, Issue 20, pp. 4102-10, (2010) (PubMed).
-------------------	--



Western Blotting

Image 1. DRD2 monoclonal antibody (M01A), clone 1B11
Western Blot analysis of DRD2 expression in HL-60 .



Western Blotting

Image 2. Western Blot detection against Immunogen (37.73
kDa) .