



[Go to Product page](#)

Datasheet for ABIN515083
anti-TSC22D3 antibody (AA 1-200)

1 Image

Overview

Quantity:	100 µg
Target:	TSC22D3
Binding Specificity:	AA 1-200
Reactivity:	Human
Host:	Rabbit
Clonality:	Polyclonal
Conjugate:	This TSC22D3 antibody is un-conjugated
Application:	Western Blotting (WB)

Product Details

Purpose:	Rabbit polyclonal antibody raised against a full-length human TSC22D3 protein.
Immunogen:	TSC22D3 (NP_932174.1, 1 a.a. ~ 200 a.a) full-length human protein.
Sequence:	MAQSKLDCRS PVGLDCCNCC LDLAHRGLQ RGSSGENNNP GSPTVSNFRQ LQEKLVFENL NTDKLNSIMR QDSLEPVL RD PCYLINEGIC NRNIDQTMLS ILLFFHSASG ASVVAIDNKI EQAMD LVKNH LMYAVREEVE ILKEQIRELV EKNSQLEREN TLLKTLASPE QLEKFQSCLS PEEPAPESPQ VPEAPGGSAV
Cross-Reactivity:	Human
Characteristics:	Antibody reactive against mammalian transfected lysate.

Target Details

Target:	TSC22D3
---------	---------

Target Details

Alternative Name:	TSC22D3 (TSC22D3 Products)
Background:	Full Gene Name: TSC22 domain family, member 3 Synonyms: DIP,DKFZp313A1123,DSIPI,GILZ,TSC-22R,hDIP
Gene ID:	1831
NCBI Accession:	NM_198057

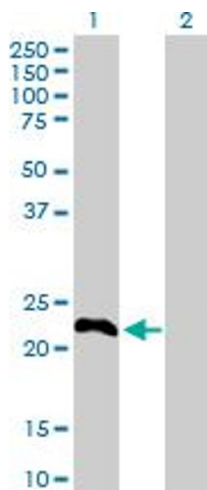
Application Details

Application Notes:	Optimal working dilution should be determined by the investigator.
Restrictions:	For Research Use only

Handling

Buffer:	In 1x PBS, pH 7.4
Handling Advice:	Aliquot to avoid repeated freezing and thawing.
Storage:	-20 °C
Storage Comment:	Store at -20°C or lower. Aliquot to avoid repeated freezing and thawing.

Images



Western Blotting

Image 1. Western Blot analysis of TSC22D3 expression in transfected 293T cell line by TSC22D3 MaxPab polyclonal antibody.

Lane 1: TSC22D3 transfected lysate(22.20 KDa).

Lane 2: Non-transfected lysate.