



Datasheet for ABIN515087
anti-SLC26A2 antibody (AA 1-108)



[Go to Product page](#)

3 Images

1 Publication

Overview

Quantity:	100 µg
Target:	SLC26A2
Binding Specificity:	AA 1-108
Reactivity:	Human
Host:	Mouse
Clonality:	Monoclonal
Conjugate:	This SLC26A2 antibody is un-conjugated
Application:	Western Blotting (WB), ELISA

Product Details

Purpose:	Mouse monoclonal antibody raised against a partial recombinant SLC26A2.
Immunogen:	SLC26A2 (NP_000103.1, 1 a.a. ~ 108 a.a) partial recombinant protein with GST tag. MW of the GST tag alone is 26 KDa.
Sequence:	MSSSESKEQHN VSPRDSAEGN DSYPSGIHLE LQRESSTDFK QFETNDQCRP YHRILIERQE KSDTNFKEFV IKKLQKNCQC SPAKAKNMIL GFLPVLQWLP KYDLKKNL
Clone:	3F6
Isotype:	IgG2b
Cross-Reactivity:	Human
Characteristics:	Antibody Reactive Against Recombinant Protein.

Target Details

Target:	SLC26A2
Alternative Name:	SLC26A2 (SLC26A2 Products)
Background:	Full Gene Name: solute carrier family 26 (sulfate transporter), member 2 Synonyms: D5S1708,DTD,DTDST,EDM4,MST153,MSTP157
Gene ID:	1836
NCBI Accession:	NM_000112
Pathways:	Glycosaminoglycan Metabolic Process , Ribonucleoside Biosynthetic Process

Application Details

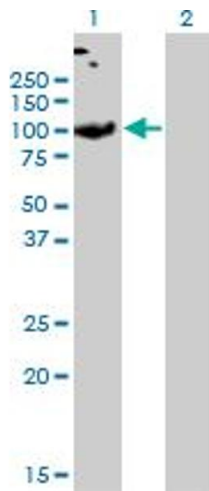
Application Notes:	Optimal working dilution should be determined by the investigator.
Restrictions:	For Research Use only

Handling

Buffer:	In 1x PBS, pH 7.4
Handling Advice:	Aliquot to avoid repeated freezing and thawing.
Storage:	-20 °C
Storage Comment:	Store at -20°C or lower. Aliquot to avoid repeated freezing and thawing.

Publications

Product cited in:	Yusa, Miyazaki, Kimura, Izawa, Kannagi: "Epigenetic silencing of the sulfate transporter gene DTDST induces sialyl Lewisx expression and accelerates proliferation of colon cancer cells." in: Cancer research , Vol. 70, Issue 10, pp. 4064-73, (2010) (PubMed).
-------------------	--

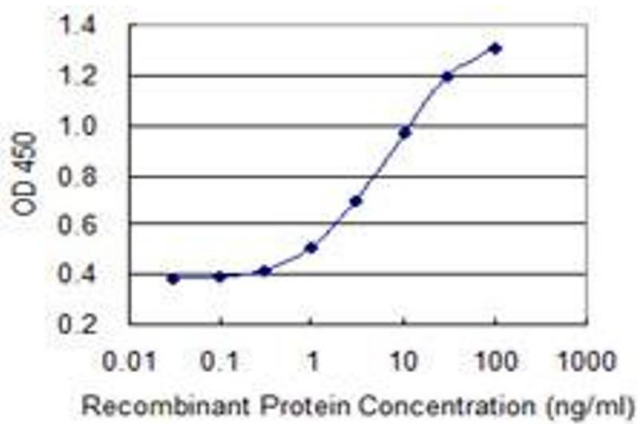


Western Blotting

Image 1. Western Blot analysis of SLC26A2 expression in transfected 293T cell line by SLC26A2 monoclonal antibody (M04), clone 3F6.

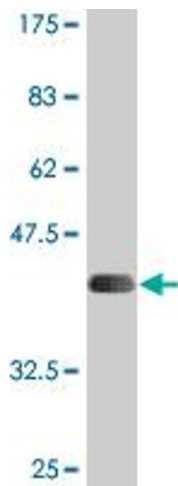
Lane 1: SLC26A2 transfected lysate(81.6 kDa).

Lane 2: Non-transfected lysate.



ELISA

Image 2. Detection limit for recombinant GST tagged SLC26A2 is 0.1 ng/ml as a capture antibody.



Western Blotting

Image 3. Western Blot detection against Immunogen (37.62 kDa).