



[Go to Product page](#)

Datasheet for ABIN515098
anti-DUSP1 antibody (AA 305-367)

3 Images

Overview

Quantity:	100 µg
Target:	DUSP1
Binding Specificity:	AA 305-367
Reactivity:	Human
Host:	Mouse
Clonality:	Monoclonal
Conjugate:	This DUSP1 antibody is un-conjugated
Application:	Western Blotting (WB), ELISA, Proximity Ligation Assay (PLA)

Product Details

Purpose:	Mouse monoclonal antibody raised against a partial recombinant DUSP1.
Immunogen:	DUSP1 (NP_004408, 305 a.a. ~ 367 a.a) partial recombinant protein with GST tag. MW of the GST tag alone is 26 KDa.
Sequence:	LLQFESQVLA PHCSAEAGSP AMAVLDRGTS TTTVFNFPVS IPVHSTNSAL SYLQSPITTS PSC
Clone:	4H7
Isotype:	IgG1
Cross-Reactivity:	Human
Characteristics:	Antibody Reactive Against Recombinant Protein.

Target Details

Target:	DUSP1
Alternative Name:	DUSP1 (DUSP1 Products)
Background:	Full Gene Name: dual specificity phosphatase 1 Synonyms: CL100,HVH1,MKP-1,MKP1,PTPN10
Gene ID:	1843
NCBI Accession:	NM_004417

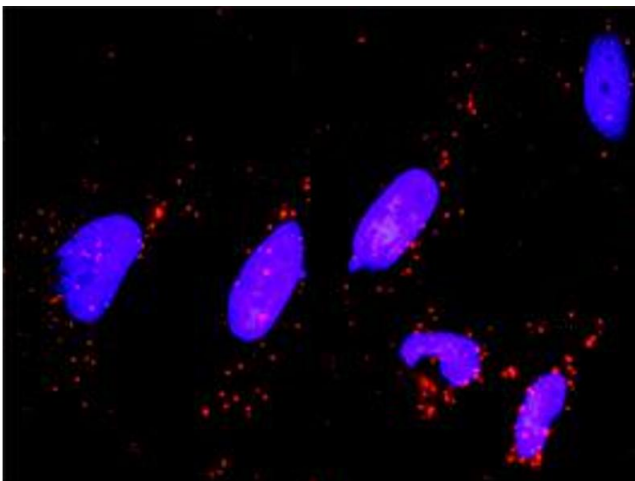
Application Details

Application Notes:	Optimal working dilution should be determined by the investigator.
Restrictions:	For Research Use only

Handling

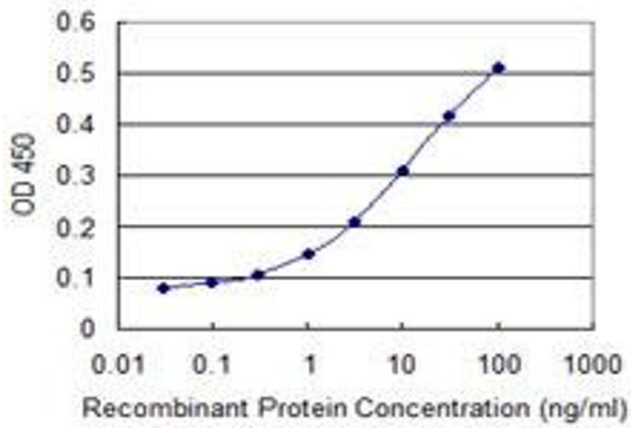
Buffer:	In 1x PBS, pH 7.4
Handling Advice:	Aliquot to avoid repeated freezing and thawing.
Storage:	-20 °C
Storage Comment:	Store at -20°C or lower. Aliquot to avoid repeated freezing and thawing.

Images



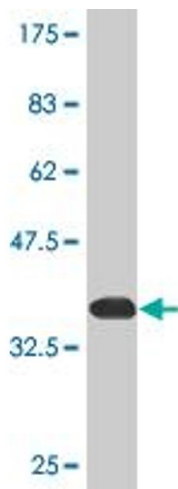
Proximity Ligation Assay

Image 1. Proximity Ligation Analysis of protein-protein interactions between MAPK3 and DUSP1. HeLa cells were stained with anti-MAPK3 rabbit purified polyclonal 1:1200 and anti-DUSP1 mouse monoclonal antibody 1:50. Each red dot represents the detection of protein-protein interaction complex, and nuclei were counterstained with DAPI (blue).



ELISA

Image 2. Detection limit for recombinant GST tagged DUSP1 is 0.3 ng/ml as a capture antibody.



Western Blotting

Image 3. Western Blot detection against Immunogen (32.67 kDa).