

Datasheet for ABIN515104
anti-DUSP4 antibody (AA 1-394)



[Go to Product page](#)

3 Images

Overview

Quantity:	100 µg
Target:	DUSP4
Binding Specificity:	AA 1-394
Reactivity:	Human
Host:	Rabbit
Clonality:	Polyclonal
Conjugate:	This DUSP4 antibody is un-conjugated
Application:	Western Blotting (WB), Immunofluorescence (IF), Proximity Ligation Assay (PLA)

Product Details

Purpose:	Rabbit polyclonal antibody raised against a full-length human DUSP4 protein.
Immunogen:	DUSP4 (NP_001385.1, 1 a.a. ~ 394 a.a) full-length human protein.
Sequence:	MVTMEELREM DCSVLKRLMN RDENGGGAGG SGSHGTLGLP SGGKCLLLDC RPFLAHSAGY ILGSVNVR CN TIVRRRAKGS VSLEQILPAE EEVRARLRSG LYS AVIVYDE RSPRAESLRE DSTVSLVVQA LRRNAERTDI CLLKGGYERF SSEYPEFCSK TKALAAIPPP VPPSATEPLD LGCSSCGTPL HDQGGPVEIL PFLYLGSAYH AARRDMLDAL GITALLNVSS DCPNHFEFGHY QYKCI PVEDN HKADISSWFM EAIEYIDAVK DCRGRVLVHC QAGISRSATI CLAYLMMKKR VRLEEAFEFV KQRRSII SPN FSFMGQLLQF ESQVLATSCA AEAASPSGPL RER GKTPATP TSQVFV SFPV SVGVHSAPSS LPYLHSPITT SPSC
Cross-Reactivity:	Human
Characteristics:	Antibody reactive against mammalian transfected lysate.

Target Details

Target:	DUSP4
Alternative Name:	DUSP4 (DUSP4 Products)
Background:	Full Gene Name: dual specificity phosphatase 4 Synonyms: HVH2,MKP-2,MKP2,TYP
Gene ID:	1846
NCBI Accession:	NM_001394
Pathways:	Neurotrophin Signaling Pathway , Activation of Innate immune Response , Toll-Like Receptors Cascades

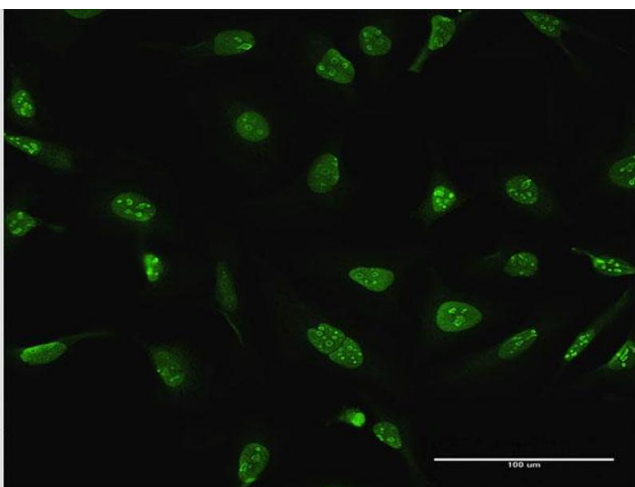
Application Details

Application Notes:	Optimal working dilution should be determined by the investigator.
Restrictions:	For Research Use only

Handling

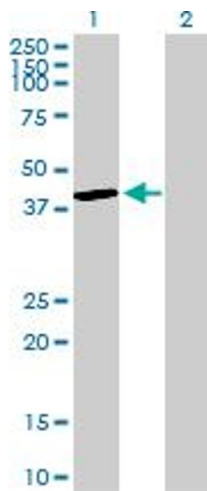
Buffer:	In 1x PBS, pH 7.4
Handling Advice:	Aliquot to avoid repeated freezing and thawing.
Storage:	-20 °C
Storage Comment:	Store at -20°C or lower. Aliquot to avoid repeated freezing and thawing.

Images



Immunofluorescence

Image 1. Immunofluorescence of purified MaxPab antibody to DUSP4 on HeLa cell. [antibody concentration 10 ug/ml]

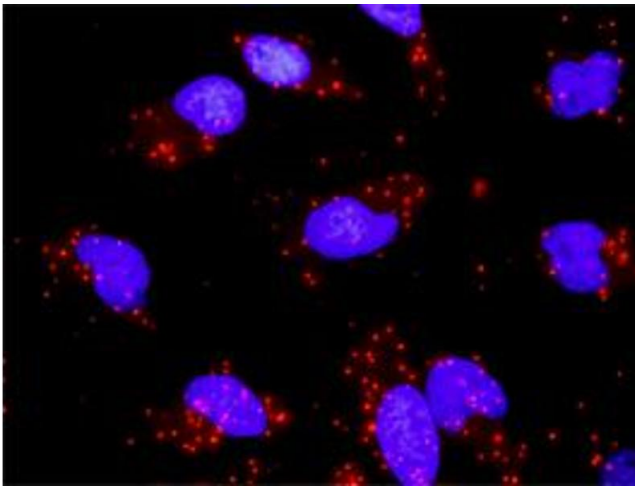


Western Blotting

Image 2. Western Blot analysis of DUSP4 expression in transfected 293T cell line by DUSP4 MaxPab polyclonal antibody.

Lane 1: DUSP4 transfected lysate(43.00 kDa).

Lane 2: Non-transfected lysate.



Proximity Ligation Assay

Image 3. Proximity Ligation Analysis of protein-protein interactions between DUSP4 and MAPK9. HeLa cells were stained with anti-DUSP4 rabbit purified polyclonal 1:1200 and anti-MAPK9 mouse monoclonal antibody 1:50. Each red dot represents the detection of protein-protein interaction complex, and nuclei were counterstained with DAPI (blue).