



[Go to Product page](#)

Datasheet for ABIN515129

anti-E2F6 antibody (AA 1-281)

2 Images

Overview

Quantity:	100 µL
Target:	E2F6
Binding Specificity:	AA 1-281
Reactivity:	Human
Host:	Rabbit
Clonality:	Polyclonal
Conjugate:	This E2F6 antibody is un-conjugated
Application:	Western Blotting (WB), Immunoprecipitation (IP)

Product Details

Purpose:	Rabbit polyclonal antibody raised against a full-length human E2F6 protein.
Immunogen:	E2F6 (NP_937987.2, 1 a.a. ~ 281 a.a) full-length human protein.
Sequence:	MSQQRPAKRL PSLLLDPTTE TVRRRCRDPI NVEGLLPSKI RINLEDNVQY VSMRKALKVK RPRFDVSLVY LTRKFM DLVR SAPGGILD LN KVATKLGVRK RRVYDITNVL DGIDLVEKKS KNHIRWIGSD LSNFGAVPQQ KKLQEELSDL SAMEDALDEL IKDCAQQLFE LTDDKENERL AYVTYQDIHS IQAFHEQIVI AVKAPAETRL DVPAPREDSI TVHIRSTNGP IDVYLCEVEQ GQTSNKRSEG VGTSSSESTH PEGPEEEENP QQSEELLEVS N
Cross-Reactivity:	Human
Characteristics:	Antibody reactive against mammalian transfected lysate.

Target Details

Target:	E2F6
Alternative Name:	E2F6 (E2F6 Products)
Background:	Full Gene Name: E2F transcription factor 6 Synonyms: E2F-6,MGC111545
Gene ID:	1876
NCBI Accession:	NM_198256

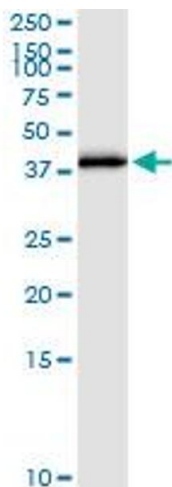
Application Details

Application Notes:	Optimal working dilution should be determined by the investigator.
Restrictions:	For Research Use only

Handling

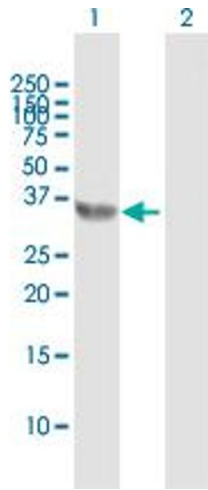
Format:	Liquid
Buffer:	No additive
Preservative:	Without preservative
Handling Advice:	Aliquot to avoid repeated freezing and thawing.
Storage:	-20 °C
Storage Comment:	Store at -20°C or lower. Aliquot to avoid repeated freezing and thawing.

Images



Immunoprecipitation

Image 1. Immunoprecipitation of E2F6 transfected lysate using anti-E2F6 MaxPab rabbit polyclonal antibody and Protein A Magnetic Bead , and immunoblotted with E2F6 MaxPab mouse polyclonal antibody (B01) .



Western Blotting

Image 2. Western Blot analysis of E2F6 expression in transfected 293T cell line by E2F6 MaxPab polyclonal antibody.

Lane 1: E2F6 transfected lysate(31.8 KDa).

Lane 2: Non-transfected lysate.