

Datasheet for ABIN515132
anti-E4F1 antibody (AA 1-784)



[Go to Product page](#)

3 Images

Overview

Quantity:	50 µg
Target:	E4F1
Binding Specificity:	AA 1-784
Reactivity:	Human
Host:	Mouse
Clonality:	Polyclonal
Conjugate:	This E4F1 antibody is un-conjugated
Application:	Western Blotting (WB), Immunofluorescence (IF)

Product Details

Purpose:	Mouse polyclonal antibody raised against a full-length human E4F1 protein.
Immunogen:	E4F1 (AAH80524.1, 1 a.a. ~ 784 a.a) full-length human protein.
Sequence:	MEGAMAVRVT AAHTAEAQAE AGREAGEGAV AAVAAALAPS GFLGLPAPFS EEDEDDVHRC GRCQAEFTAL EDFVQHKIQK ACQRAPPEAL PATPATTALL GQEVVPAAPG PEEPITVAHI VVEAASLAAD ISHASDLVGG GHIKEVIVAA EAELGDGEMA EAPGSPHQQG LGLAGEGEQA QVKLLVNKDG RYVCALCHKT FKTGSILKAH MVTHSSRKDH ECKLCGASFR TKGSLIRHHR RHTDERPYKC SKCGKSFRES GALTRHLKSL TPCTEKIRFS VSKDVVVSKE DARAGSGAGA AGLGTATSSV TGEPIETSPV IHLVTDAGT VIHEVHVQMQ ELSLGMKALA PEPPVVSQELP CSSEGSRENL LHQAMQNSGI VLERAAGEEG ALEPAPAAGS SPQPLAVAAP QLPVLEVQPL ETQVASEASA VPRTHPCPQC SETFPTAATL EAHKRGHTGP RPFACAQCGK AFPKAYLLKK HQEVHVRERR FRCGDCGKLY KTIAHVRGHR RVHSDERPYP CPKCGKRYKT KNAQQVHFRT HLEEKPHVCQ FCSRGFREKG SLVRHVRHHT GEKPFKCYKC GRGFAEHGTL NRHLRTKGGC

Product Details

LLEVEELLVS EDSPAAATTV LTEDPHTVLV EFSSVWADTQ EYIIEATADD AETSEATEII
EGTQTEVDSH IMKVVQQIVH QASAGHQIIV QNVTMDEETA LGPEAAAAADT ITIATPESLT
EQVAMTLASA ISEGTVLAAR AGTSGTEQAT VTMVSSDIE ILEHAGELVI ASPEGQLEVQ TVIV

Cross-Reactivity: Human

Characteristics: Antibody reactive against mammalian transfected lysate.

Target Details

Target: E4F1

Alternative Name: E4F1 ([E4F1 Products](#))

Background: Full Gene Name: E4F transcription factor 1
Synonyms: E4F,MGC99614

Gene ID: 1877

Application Details

Application Notes: Optimal working dilution should be determined by the investigator.

Restrictions: For Research Use only

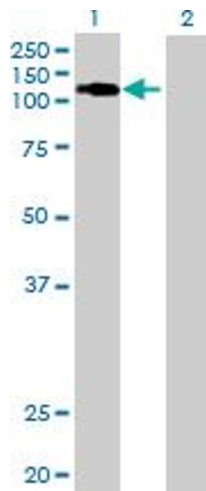
Handling

Buffer: In 1x PBS, pH 7.4

Handling Advice: Aliquot to avoid repeated freezing and thawing.

Storage: -20 °C

Storage Comment: Store at -20°C or lower. Aliquot to avoid repeated freezing and thawing.

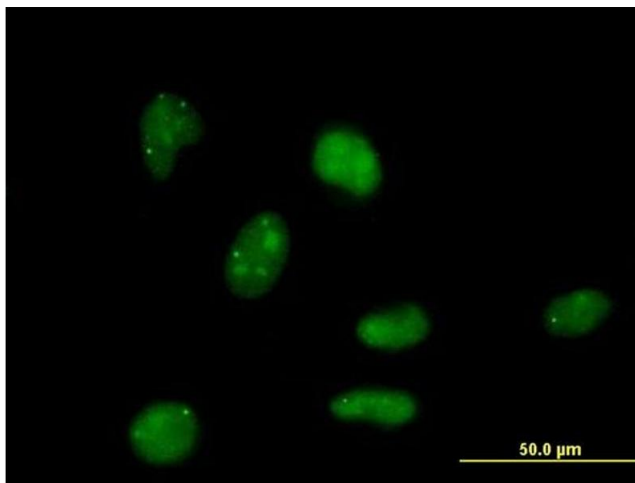


Western Blotting

Image 1. Western Blot analysis of E4F1 expression in transfected 293T cell line by E4F1 MaxPab polyclonal antibody.

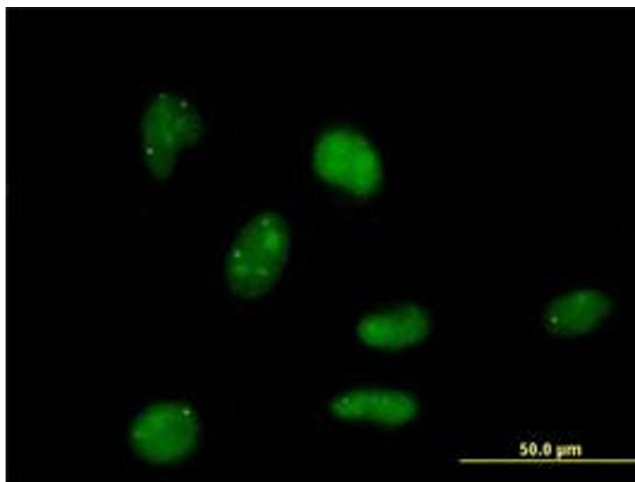
Lane 1: E4F1 transfected lysate(86.24 KDa).

Lane 2: Non-transfected lysate.



Immunofluorescence

Image 2. Immunofluorescence of purified MaxPab antibody to E4F1 on HeLa cell. [antibody concentration 10 μg/ml]



Immunofluorescence

Image 3. Immunofluorescence of purified MaxPab antibody to E4F1 on HeLa cell. (antibody concentration 10 μg/mL)