



[Go to Product page](#)

Datasheet for ABIN515158

## anti-Endothelin 1 antibody (AA 1-212)

### 2 Images

#### Overview

Quantity:	50 µg
Target:	Endothelin 1 (EDN1)
Binding Specificity:	AA 1-212
Reactivity:	Human
Host:	Mouse
Clonality:	Polyclonal
Conjugate:	This Endothelin 1 antibody is un-conjugated
Application:	Western Blotting (WB)

#### Product Details

Purpose:	Mouse polyclonal antibody raised against a full-length human EDN1 protein.
Immunogen:	EDN1 (AAH09720.1, 1 a.a. ~ 212 a.a) full-length human protein.
Sequence:	MDYLLMIFSL LRVACQGAPE TAVLGAELSA VGENGGEKPT PSPPWRLRRS KRCSSSLMD KECVYFCHLD IIVVNTPEHV VPYGLGSPRS KRALENLLPT KATDRENRCQ CASQKDKKCW NFCQAGKELR AEDIMEKDWN NHKKGKDCSK LGKKCIYQQL VRGRKIRRSS EEHLRQTRSE TMRNSVKSSF HDPKLGKGNPS RERYVTHNRA HW
Cross-Reactivity:	Human
Characteristics:	Antibody reactive against mammalian transfected lysate.

#### Target Details

Target:	Endothelin 1 (EDN1)
---------	---------------------

## Target Details

Alternative Name:	EDN1 ( <a href="#">EDN1 Products</a> )
Background:	Full Gene Name: endothelin 1 Synonyms: ET1,HDLCQ7
Gene ID:	1906
NCBI Accession:	<a href="#">NM_001955</a>
Pathways:	<a href="#">Hormone Transport</a> , <a href="#">Negative Regulation of Hormone Secretion</a> , <a href="#">Regulation of Systemic Arterial Blood Pressure by Hormones</a> , <a href="#">cAMP Metabolic Process</a> , <a href="#">Regulation of Muscle Cell Differentiation</a> , <a href="#">Regulation of G-Protein Coupled Receptor Protein Signaling</a> , <a href="#">Regulation of Cell Size</a>

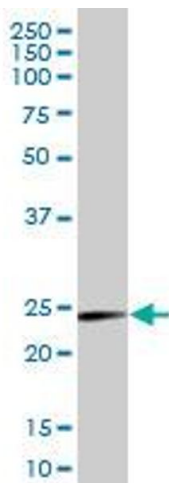
## Application Details

Application Notes:	Optimal working dilution should be determined by the investigator.
Restrictions:	For Research Use only

## Handling

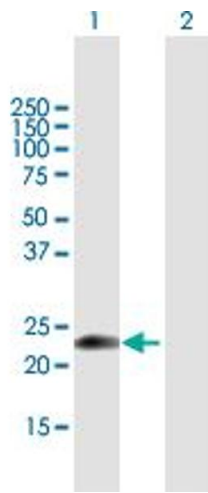
Buffer:	In 1x PBS, pH 7.4
Handling Advice:	Aliquot to avoid repeated freezing and thawing.
Storage:	-20 °C
Storage Comment:	Store at -20°C or lower. Aliquot to avoid repeated freezing and thawing.

## Images



### Western Blotting

**Image 1.** EDN1 MaxPab polyclonal antibody. Western Blot analysis of EDN1 expression in human placenta.



### Western Blotting

**Image 2.** Western Blot analysis of EDN1 expression in transfected 293T cell line by EDN1 MaxPab polyclonal antibody.

Lane 1: EDN1 transfected lysate(23.32 kDa).

Lane 2: Non-transfected lysate.