



[Go to Product page](#)

Datasheet for ABIN515166
anti-PHC1 antibody (AA 751-851)

3 Images

Overview

Quantity:	100 µg
Target:	PHC1
Binding Specificity:	AA 751-851
Reactivity:	Human
Host:	Mouse
Clonality:	Monoclonal
Conjugate:	This PHC1 antibody is un-conjugated
Application:	Western Blotting (WB), ELISA

Product Details

Purpose:	Mouse monoclonal antibody raised against a partial recombinant PHC1.
Immunogen:	PHC1 (NP_004417, 751 a.a. ~ 851 a.a) partial recombinant protein with GST tag. MW of the GST tag alone is 26 KDa.
Sequence:	PVGCSQLLKE SEKPLQTGLP TGLTENQSGG PLGVDSPSAE LDKKANLLKC EYCGKYAPAE QFRGSKRFCS MTCAKRYNVS CSHQFRLKRK KMKEFQEANY *
Clone:	3G1
Isotype:	IgG2b
Cross-Reactivity:	Human
Characteristics:	Antibody Reactive Against Recombinant Protein.

Target Details

Target:	PHC1
Alternative Name:	PHC1 (PHC1 Products)
Background:	Full Gene Name: polyhomeotic homolog 1 (Drosophila) Synonyms: EDR1,HPH1,RAE28
Gene ID:	1911
NCBI Accession:	NM_004426

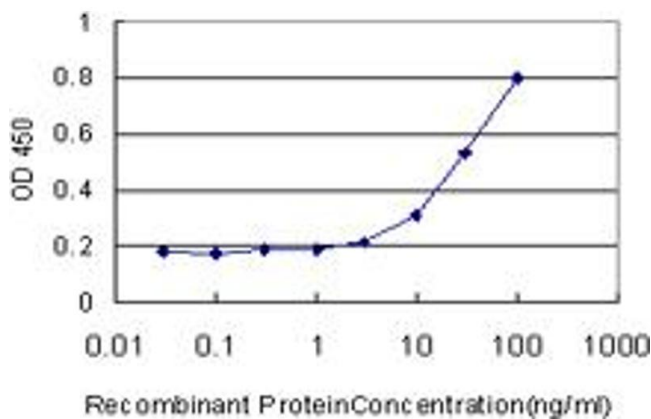
Application Details

Application Notes:	Optimal working dilution should be determined by the investigator.
Restrictions:	For Research Use only

Handling

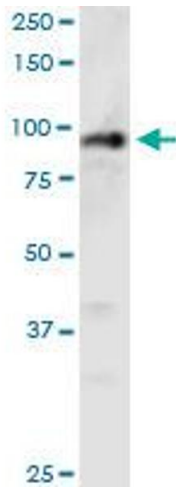
Buffer:	In 1x PBS, pH 7.4
Handling Advice:	Aliquot to avoid repeated freezing and thawing.
Storage:	-20 °C
Storage Comment:	Store at -20°C or lower. Aliquot to avoid repeated freezing and thawing.

Images



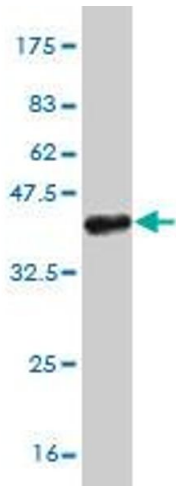
ELISA

Image 1. Detection limit for recombinant GST tagged PHC1 is approximately 3ng/ml as a capture antibody.



Western Blotting

Image 2. PHC1 monoclonal antibody (M05), clone 3G1. Western Blot analysis of PHC1 expression in MCF-7.



Western Blotting

Image 3. Western Blot detection against Immunogen (37.11 kDa).