



[Go to Product page](#)

Datasheet for ABIN515167
anti-PHC2 antibody (AA 1-323)

1 Image

Overview

Quantity:	50 µg
Target:	PHC2 (Phc2)
Binding Specificity:	AA 1-323
Reactivity:	Human
Host:	Mouse
Clonality:	Polyclonal
Conjugate:	This PHC2 antibody is un-conjugated
Application:	Western Blotting (WB)

Product Details

Purpose:	Mouse polyclonal antibody raised against a full-length human PHC2 protein.
Immunogen:	PHC2 (NP_004418.2, 1 a.a. ~ 323 a.a) full-length human protein.
Sequence:	MTSGNGNSAS SIAGTAPQNG ENKPPQAIK PQLTHVIEG FVIQEGAEPF PVGRSLLVG NLKKKYAQGF LPEKLPQGDH TTTDSEMEE PYLQESKEEG APLKLCCELC GRVDFAYKFK RSKRFCSMAC AKRYNVGCTK RVGLFHSDRS KLQKAGAATH NRRRASKASL PPLTKDTKKQ PTGTVPLSVT AALQLTHSQE DSSRCDNSS YEEPLSPISA SSSTSRRRQG QRDLELPDMH MRDLVGMGHH FLPSEPTKWN VEDVYEFIRS LPGCQEIAEE FRAQEIDGQA LLLLKEDHLM SAMNIKLGPA LKIYARISML KDS
Cross-Reactivity:	Human
Characteristics:	Antibody reactive against mammalian transfected lysate.

Target Details

Target:	PHC2 (PhC2)
Alternative Name:	PHC2 (PhC2 Products)
Background:	Full Gene Name: polyhomeotic homolog 2 (Drosophila) Synonyms: EDR2,HPH2,MGC163502,PH2
Gene ID:	1912
NCBI Accession:	NM_004427

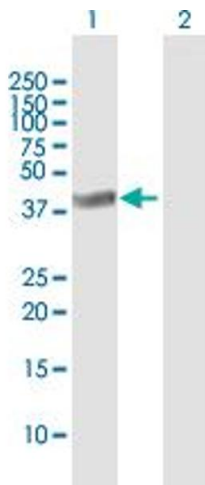
Application Details

Application Notes:	Optimal working dilution should be determined by the investigator.
Restrictions:	For Research Use only

Handling

Buffer:	In 1x PBS, pH 7.4
Handling Advice:	Aliquot to avoid repeated freezing and thawing.
Storage:	-20 °C
Storage Comment:	Store at -20°C or lower. Aliquot to avoid repeated freezing and thawing.

Images



Western Blotting

Image 1. Western Blot analysis of PHC2 expression in transfected 293T cell line by PHC2 MaxPab polyclonal antibody.

Lane 1: PHC2 transfected lysate(35.53 kDa).

Lane 2: Non-transfected lysate.