



[Go to Product page](#)

Datasheet for ABIN515171  
**anti-EEF1D antibody (AA 1-91)**

4 Images

Overview

Quantity:	100 µg
Target:	EEF1D
Binding Specificity:	AA 1-91
Reactivity:	Human
Host:	Mouse
Clonality:	Monoclonal
Conjugate:	This EEF1D antibody is un-conjugated
Application:	Western Blotting (WB), ELISA, Immunofluorescence (IF)

Product Details

Purpose:	Mouse monoclonal antibody raised against a partial recombinant EEF1D.
Immunogen:	EEF1D (NP_115754, 1 a.a. ~ 91 a.a) partial recombinant protein with GST tag. MW of the GST tag alone is 26 KDa.
Sequence:	MRSKGASCTL ETVWEDKHKY EEAERRFYEH EATQAAASAQ QLPAEGPAMN GPGQDDPEDA DEAEAPDGGG RRDPRKSQDS RKPLQKKRKR S
Clone:	4B12
Isotype:	IgG2a
Cross-Reactivity:	Human
Characteristics:	Antibody Reactive Against Recombinant Protein.

## Target Details

Target:	EEF1D
Alternative Name:	EEF1D ( <a href="#">EEF1D Products</a> )
Background:	Full Gene Name: eukaryotic translation elongation factor 1 delta (guanine nucleotide exchange protein) Synonyms: EF-1D,EF1D,FLJ20897,FP1047
Gene ID:	1936
NCBI Accession:	<a href="#">NM_032378</a>

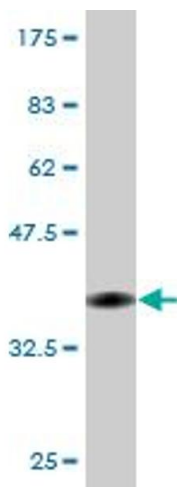
## Application Details

Application Notes:	Optimal working dilution should be determined by the investigator.
Restrictions:	For Research Use only

## Handling

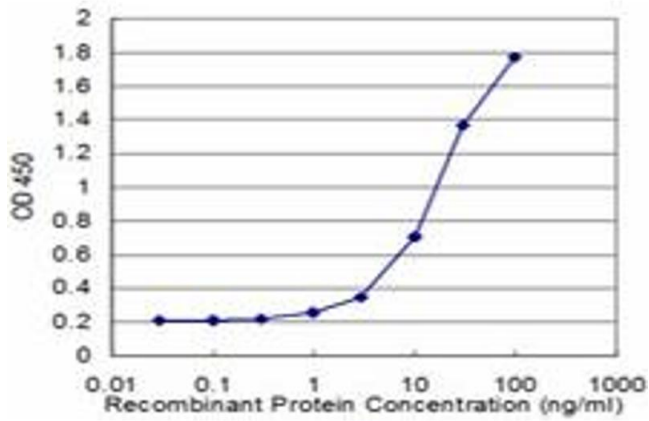
Buffer:	In 1x PBS, pH 7.4
Handling Advice:	Aliquot to avoid repeated freezing and thawing.
Storage:	-20 °C
Storage Comment:	Store at -20°C or lower. Aliquot to avoid repeated freezing and thawing.

## Images



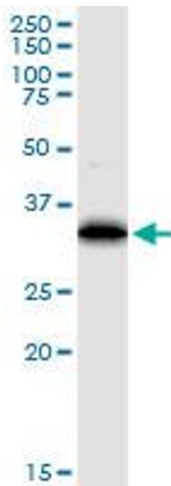
### Western Blotting

**Image 1.** Western Blot detection against Immunogen (35.75 kDa).



### ELISA

**Image 2.** Detection limit for recombinant GST tagged EEF1D is approximately 1ng/ml as a capture antibody.



### Western Blotting

**Image 3.** EEF1D monoclonal antibody (M04), clone 4B12. Western Blot analysis of EEF1D expression in human pancreas.

Please check the [product details page](#) for more images. Overall 4 images are available for ABIN515171.