



Datasheet for ABIN515219
anti-ELANE antibody (AA 168-267)



[Go to Product page](#)

1 Image

Overview

Quantity:	200 µL
Target:	ELANE
Binding Specificity:	AA 168-267
Reactivity:	Human
Host:	Mouse
Clonality:	Monoclonal
Conjugate:	This ELANE antibody is un-conjugated
Application:	ELISA, Western Blotting (WB)

Product Details

Purpose:	Mouse monoclonal antibody raised against a partial recombinant ELA2.
Immunogen:	ELA2 (NP_001963, 168 a.a. ~ 267 a.a) partial recombinant protein with GST tag. MW of the GST tag alone is 26 KDa.
Sequence:	VLQELNVTVV TSLCRRSNVC TLVRGRQAGV CFGDGSPLV CNGLIHGIAS FVRGGCASGL YPDAFAPVAQ FVNWIDSIIQ RSEDNPCPHP RDPDPASRTH
Clone:	4E11
Isotype:	IgG2a kappa
Cross-Reactivity:	Human

Target Details

Target:	ELANE
Alternative Name:	ELA2 (ELANE Products)
Background:	Full Gene Name: elastase 2, neutrophil Synonyms: GE,HLE,HNE,NE,PMN-E
Gene ID:	1991
NCBI Accession:	NP_001963 , NM_001972

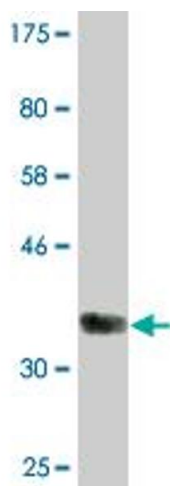
Application Details

Application Notes:	Optimal working dilution should be determined by the investigator.
Comment:	Product Quality tested by: Antibody Reactive Against Recombinant Protein.
Restrictions:	For Research Use only

Handling

Format:	Liquid
Buffer:	In ascites fluid
Handling Advice:	Aliquot to avoid repeated freezing and thawing.
Storage:	-20 °C
Storage Comment:	Store at -20°C or lower. Aliquot to avoid repeated freezing and thawing.

Images



Western Blotting

Image 1. Western Blot detection against Immunogen (36.74 kDa) .