



[Go to Product page](#)

Datasheet for ABIN515231
anti-SERPINB1 antibody (AA 1-379)

2 Images

Overview

Quantity:	50 µg
Target:	SERPINB1
Binding Specificity:	AA 1-379
Reactivity:	Human
Host:	Mouse
Clonality:	Polyclonal
Conjugate:	This SERPINB1 antibody is un-conjugated
Application:	Western Blotting (WB)

Product Details

Purpose:	Mouse polyclonal antibody raised against a full-length human SERPINB1 protein.
Immunogen:	SERPINB1 (NP_109591.1, 1 a.a. ~ 379 a.a) full-length human protein.
Sequence:	MEQLSSANTR FALDLFLALS ENNPAGNIFI SPFSISSAMA MVFLGTRGNT AAQLSKTFHF NTVEEVHSRF QSLNADINKR GASYILKLAN RLYGEKTYNF LPEFLVSTQK TYGADLASVD FQHASEDARK TINQWVKGQT EGKIPELLAS GMVDNMTKLV LVNAIFYKGN WKDKFMKEAT TNAPFRLNKK DRKTVKMMYQ KKKFAYGYIE DLKCRVLELP YQGEELSMVI LLPDDIEDES TGLKKIEEQL TLEKLHEWTK PENLDFIEVN VSLPRFKLEE SYTLNSDLAR LGVQDLFNSS KADLSGMSGA RDIFISKIVH KSFVEVNEEG TEAAAATAGI ATFCMLMPEE NFTADHPFLF FIRHNSSGSI LFLGRFSSP
Cross-Reactivity:	Human
Characteristics:	Antibody reactive against mammalian transfected lysate.

Target Details

Target:	SERPINB1
Alternative Name:	SERPINB1 (SERPINB1 Products)
Background:	Full Gene Name: serpin peptidase inhibitor, clade B (ovalbumin), member 1 Synonyms: EI,ELANH2,LEI,M/NEI,MNEI,PI2
Gene ID:	1992
NCBI Accession:	NM_030666

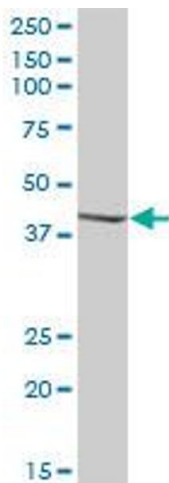
Application Details

Application Notes:	Optimal working dilution should be determined by the investigator.
Restrictions:	For Research Use only

Handling

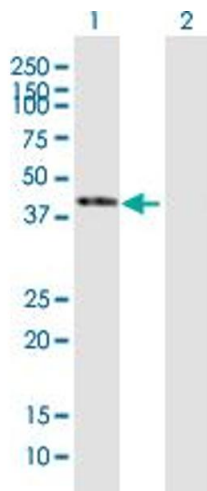
Buffer:	In 1x PBS, pH 7.4
Handling Advice:	Aliquot to avoid repeated freezing and thawing.
Storage:	-20 °C
Storage Comment:	Store at -20°C or lower. Aliquot to avoid repeated freezing and thawing.

Images



Western Blotting

Image 1. SERPINB1 MaxPab polyclonal antibody. Western Blot analysis of SERPINB1 expression in human pancreas.



Western Blotting

Image 2. Western Blot analysis of SERPINB1 expression in transfected 293T cell line by SERPINB1 MaxPab polyclonal antibody.

Lane 1: SERPINB1 transfected lysate(41.69 KDa).

Lane 2: Non-transfected lysate.