



Datasheet for ABIN515258
anti-ELK3 antibody (AA 1-407)



[Go to Product page](#)

1 Image

Overview

Quantity:	100 µg
Target:	ELK3
Binding Specificity:	AA 1-407
Reactivity:	Human
Host:	Rabbit
Clonality:	Polyclonal
Conjugate:	This ELK3 antibody is un-conjugated
Application:	Western Blotting (WB)

Product Details

Purpose:	Rabbit polyclonal antibody raised against a full-length human ELK3 protein.
Immunogen:	ELK3 (NP_005221.2, 1 a.a. ~ 407 a.a) full-length human protein.
Sequence:	MESAITLWQF LLQLLLDQKH EHLICWTSND GEFKLLKAAE VAKLWGLRKN KTNMNYDKLS RALRYYYDKN IIKKVIGQKF VYKFVSFPEI LKMDPHAVEI SRESLLLQDS DCKASPEGRE AHKHGLAALR STSRNEYIHS GLYSSFTINS LQNPPDAFKA IKTEKLEEPP EDSPPVEEVR TVIRFVTNKT DKHVTRPVVS LPSTSEAAAA SAFLASSVSA KISSLMLPNA ASSASPFPS SRSPSLPNS PLPSEHRS LF LEACHSDS LEPLNLSSGS KTKSPSLPPK AKKPKGLEIS APPLVLSGTD IGSIALNSPA LPSGSLTPAF FTAQTPNGLL LTPSPLLSSI HFWSSLSPVA PLSPARLQGP STLFQFPTLL NGHMPVPIPS LDRAASPVLL SSNSQKS
Cross-Reactivity:	Human
Characteristics:	Antibody reactive against mammalian transfected lysate.

Target Details

Target:	ELK3
Alternative Name:	ELK3 (ELK3 Products)
Background:	Full Gene Name: ELK3, ETS-domain protein (SRF accessory protein 2) Synonyms: ERP,NET,SAP2
Gene ID:	2004
NCBI Accession:	NM_005230

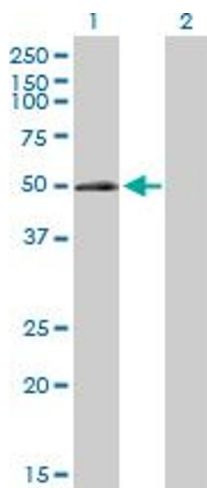
Application Details

Application Notes:	Optimal working dilution should be determined by the investigator.
Restrictions:	For Research Use only

Handling

Buffer:	In 1x PBS, pH 7.4
Handling Advice:	Aliquot to avoid repeated freezing and thawing.
Storage:	-20 °C
Storage Comment:	Store at -20°C or lower. Aliquot to avoid repeated freezing and thawing.

Images



Western Blotting

Image 1. Western Blot analysis of ELK3 expression in transfected 293T cell line by ELK3 MaxPab polyclonal antibody.

Lane 1: ELK3 transfected lysate(44.20 KDa).

Lane 2: Non-transfected lysate.