



[Go to Product page](#)

Datasheet for ABIN515259

## anti-ELK3 antibody (AA 101-200)

### 3 Images

#### Overview

Quantity:	100 µg
Target:	ELK3
Binding Specificity:	AA 101-200
Reactivity:	Human
Host:	Mouse
Clonality:	Monoclonal
Conjugate:	This ELK3 antibody is un-conjugated
Application:	Western Blotting (WB), ELISA

#### Product Details

Purpose:	Mouse monoclonal antibody raised against a partial recombinant ELK3.
Immunogen:	ELK3 (NP_005221.2, 101 a.a. ~ 200 a.a) partial recombinant protein with GST tag. MW of the GST tag alone is 26 KDa.
Sequence:	SRESLLLQDS DCKASPEGRE AHKHGLAALR STSRNEYIHS GLYSSFTINS LQNPPDAFKA IKTEKLEEPP EDSPPVEEVR TVIRFVTNKT DKHVTRPVVS
Clone:	3A12
Isotype:	IgG2a
Cross-Reactivity:	Human
Characteristics:	Antibody Reactive Against Recombinant Protein.

## Target Details

Target:	ELK3
Alternative Name:	ELK3 ( <a href="#">ELK3 Products</a> )
Background:	Full Gene Name: ELK3, ETS-domain protein (SRF accessory protein 2) Synonyms: ERP,NET,SAP2
Gene ID:	2004
NCBI Accession:	<a href="#">NM_005230</a>

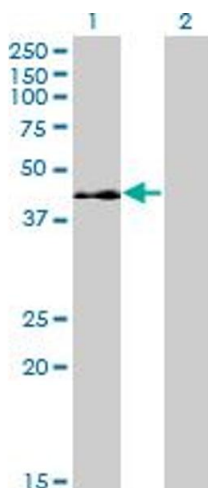
## Application Details

Application Notes:	Optimal working dilution should be determined by the investigator.
Restrictions:	For Research Use only

## Handling

Buffer:	In 1x PBS, pH 7.4
Handling Advice:	Aliquot to avoid repeated freezing and thawing.
Storage:	-20 °C
Storage Comment:	Store at -20°C or lower. Aliquot to avoid repeated freezing and thawing.

## Images

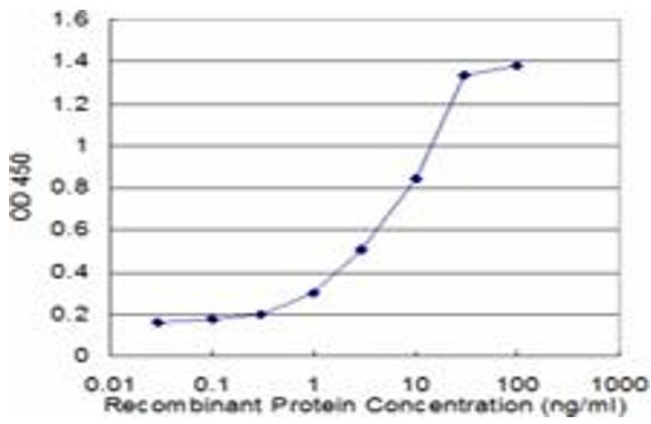


### Western Blotting

**Image 1.** Western Blot analysis of ELK3 expression in transfected 293T cell line by ELK3 monoclonal antibody (M02), clone 3A12.

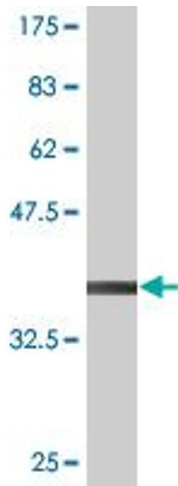
Lane 1: ELK3 transfected lysate(44.2 KDa).

Lane 2: Non-transfected lysate.



### ELISA

**Image 2.** Detection limit for recombinant GST tagged ELK3 is approximately 0.3ng/ml as a capture antibody.



### Western Blotting

**Image 3.** Western Blot detection against Immunogen (36.74 KDa).