

Datasheet for ABIN515276
anti-Cortactin antibody (AA 341-450)[Go to Product page](#)

4 Images

Overview

Quantity:	100 µg
Target:	Cortactin (CTTN)
Binding Specificity:	AA 341-450
Reactivity:	Human
Host:	Mouse
Clonality:	Monoclonal
Conjugate:	This Cortactin antibody is un-conjugated
Application:	Western Blotting (WB), ELISA, Proximity Ligation Assay (PLA)

Product Details

Purpose:	Mouse monoclonal antibody raised against a partial recombinant CTTN.
Immunogen:	CTTN (NP_005222.2, 341 a.a. ~ 450 a.a) partial recombinant protein with GST tag. MW of the GST tag alone is 26 KDa.
Sequence:	EAVTSKTSNI RANFENLAKE KEQEDRRKAE AERAQRMAKE RQEQQEARRK LEEQARAKTQ TPPVSPAPQP TEERLPSSPV YEDAASFKAELSYRGPVSGT EPEPVYSMEA
Clone:	2B5
Isotype:	IgG2a
Cross-Reactivity:	Human
Characteristics:	Antibody Reactive Against Recombinant Protein.

Target Details

Target:	Cortactin (CTTN)
Alternative Name:	CTTN (CTTN Products)
Background:	Full Gene Name: cortactin Synonyms: EMS1,FLJ34459
Gene ID:	2017
NCBI Accession:	NM_005231
Pathways:	MAPK Signaling

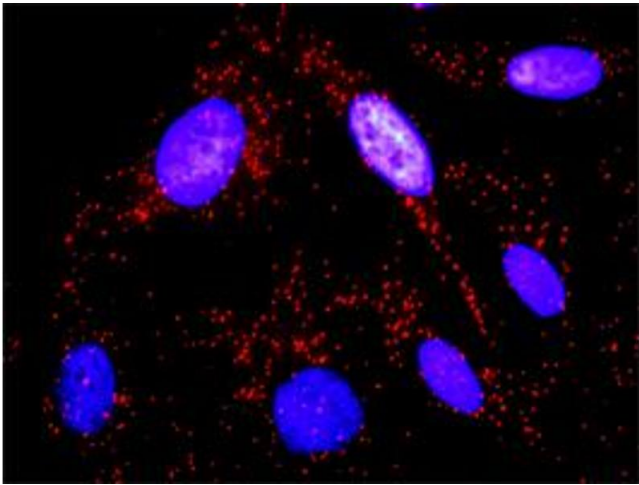
Application Details

Application Notes:	Optimal working dilution should be determined by the investigator.
Restrictions:	For Research Use only

Handling

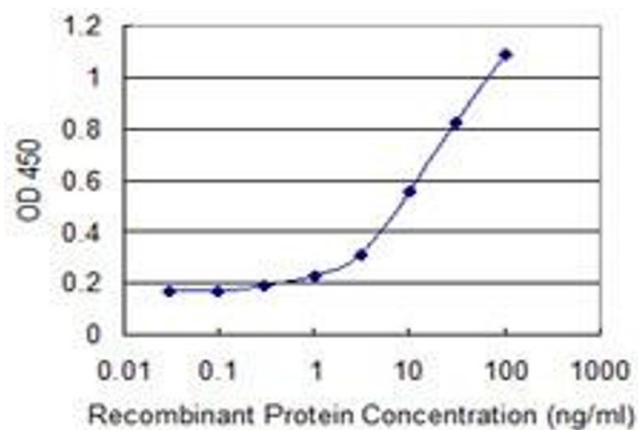
Buffer:	In 1x PBS, pH 7.4
Handling Advice:	Aliquot to avoid repeated freezing and thawing.
Storage:	-20 °C
Storage Comment:	Store at -20°C or lower. Aliquot to avoid repeated freezing and thawing.

Images



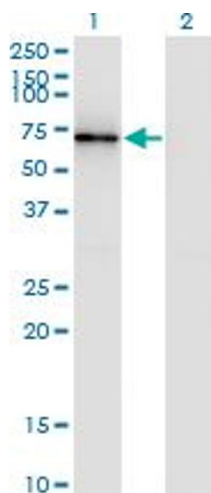
Proximity Ligation Assay

Image 1. Proximity Ligation Analysis of protein-protein interactions between SYK and CTTN. HeLa cells were stained with anti-SYK rabbit purified polyclonal 1:1200 and anti-CTTN mouse monoclonal antibody 1:50. Each red dot represents the detection of protein-protein interaction complex, and nuclei were counterstained with DAPI (blue).



ELISA

Image 2. Detection limit for recombinant GST tagged CTTN is 0.3 ng/ml as a capture antibody.



Western Blotting

Image 3. Western Blot analysis of CTTN expression in transfected 293T cell line by CTTN monoclonal antibody (M01), clone 2B5.

Lane 1: CTTN transfected lysate (Predicted MW: 57.5 KDa).

Lane 2: Non-transfected lysate.

Please check the [product details page](#) for more images. Overall 4 images are available for ABIN515276.