



[Go to Product page](#)

Datasheet for ABIN515285

anti-EN1 antibody (AA 266-392)

3 Images

1 Publication

Overview

Quantity:	100 µg
Target:	EN1
Binding Specificity:	AA 266-392
Reactivity:	Human
Host:	Mouse
Clonality:	Monoclonal
Conjugate:	This EN1 antibody is un-conjugated
Application:	Western Blotting (WB), ELISA, Immunohistochemistry (Paraffin-embedded Sections) (IHC (p))

Product Details

Purpose:	Mouse monoclonal antibody raised against a full length recombinant EN1.
Immunogen:	EN1 (NP_001417, 266 a.a. ~ 392 a.a) full length recombinant protein with GST tag. MW of the GST tag alone is 26 KDa.
Sequence:	SQQPLVWPAW VYCTRYSDRP SSGPRTRKLLK KKKNEKEDKR PRTAFTAELQL QRLKAIEFQAN RYITEQRRQT LAQELSLNES QIKIWFQNKR AKIKKATGIK NGLALHLMAQ GLYNHSTTTV QDKDESE*
Clone:	3H2
Isotype:	IgG2a
Cross-Reactivity:	Human
Characteristics:	Antibody Reactive Against Recombinant Protein.

Target Details

Target:	EN1
Alternative Name:	EN1 (EN1 Products)
Background:	Full Gene Name: engrailed homeobox 1 Synonyms:
Gene ID:	2019
NCBI Accession:	NM_001426
Pathways:	Dopaminergic Neurogenesis

Application Details

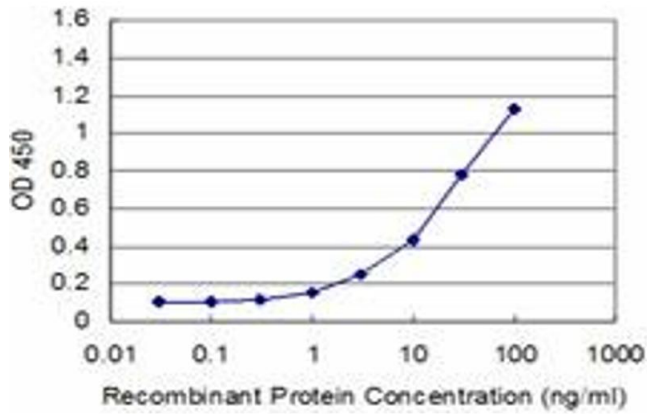
Application Notes:	Optimal working dilution should be determined by the investigator.
Restrictions:	For Research Use only

Handling

Buffer:	In 1x PBS, pH 7.4
Handling Advice:	Aliquot to avoid repeated freezing and thawing.
Storage:	-20 °C
Storage Comment:	Store at -20°C or lower. Aliquot to avoid repeated freezing and thawing.

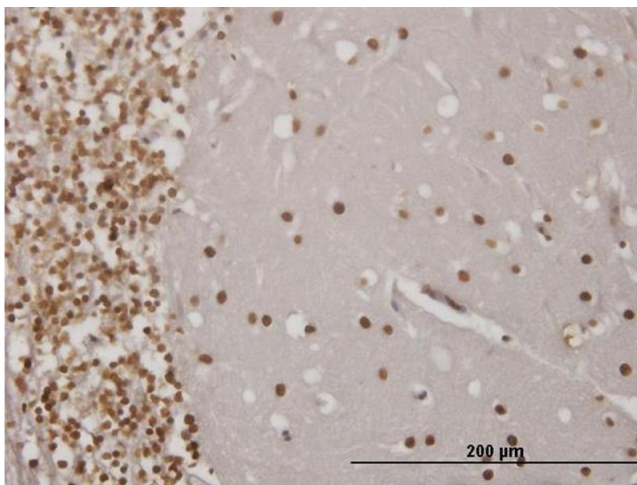
Publications

Product cited in:	Veenvliet, Dos Santos, Kouwenhoven, von Oerthel, Lim, van der Linden, Koerkamp, Holstege, Smidt: "Specification of dopaminergic subsets involves interplay of En1 and Pitx3." in: Development (Cambridge, England) , Vol. 140, Issue 16, pp. 3373-84, (2013) (PubMed).
-------------------	---



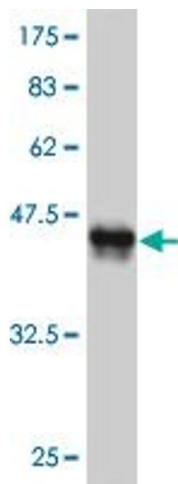
ELISA

Image 1. Detection limit for recombinant GST tagged EN1 is approximately 1ng/ml as a capture antibody.



Immunostaining

Image 2. Immunoperoxidase of monoclonal antibody to EN1 on formalin-fixed paraffin-embedded human cerebellum. [antibody concentration 3 ug/ml]



Western Blotting

Image 3. Western Blot detection against Immunogen (40.08 KDa) .