

Datasheet for ABIN515300
anti-ENO1P1 antibody (AA 1-388)[Go to Product page](#)

4 Images

Overview

Quantity:	50 µg
Target:	ENO1P1
Binding Specificity:	AA 1-388
Reactivity:	Human
Host:	Mouse
Clonality:	Polyclonal
Conjugate:	This ENO1P1 antibody is un-conjugated
Application:	Immunofluorescence (IF), Western Blotting (WB)

Product Details

Purpose:	Mouse polyclonal antibody raised against a full-length human ENO1P protein.
Immunogen:	ENO1P (AAH46928.1, 1 a.a. ~ 388 a.a) full-length human protein.
Sequence:	MSILKIHARE LFDSRGNPTV EVDLFTSEGL FRAAVPSGAS TGIYEVLELQ DNDKTRYMGK GVSKPVEPIN KTIAPVLVSK KLVNTEQEKI DKLMIEMDGT ENKSKFGANA ILGVSLAACK ASAVEKGVPL YHHIADLSGN SKVILPVPVF NVINGSSHAV TKLAMQEFMV LPVGAANFRE AMPIGAEVYH SLKNVIKEY GKDATGVGDG GAFAPNILEN KEGLELLKTA IGKAGYTDKV IVSMDVEASE FFRSGKYDLE FKFLDDPTRY ISPDCLADLY KSFKNYPVW STEDPFDQDD WGAWQKFTAS AGIQVVEDDL RVTNPKRTAS AVNEKKNCL LKVNQIRSV TESLQACKLA QANGWCVMPV HHSGETENTF ITDLVVGL
Cross-Reactivity:	Human
Characteristics:	Antibody reactive against mammalian transfected lysate.

Target Details

Target:	ENO1P1
Alternative Name:	ENO1P (ENO1P1 Products)
Background:	Full Gene Name: enolase 1, (alpha) pseudogene Synonyms:
Gene ID:	2025

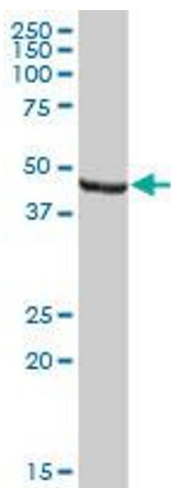
Application Details

Application Notes:	Optimal working dilution should be determined by the investigator.
Restrictions:	For Research Use only

Handling

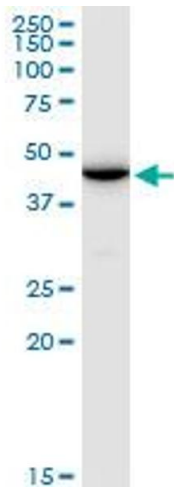
Buffer:	In 1x PBS, pH 7.4
Handling Advice:	Aliquot to avoid repeated freezing and thawing.
Storage:	-20 °C
Storage Comment:	Store at -20°C or lower. Aliquot to avoid repeated freezing and thawing.

Images



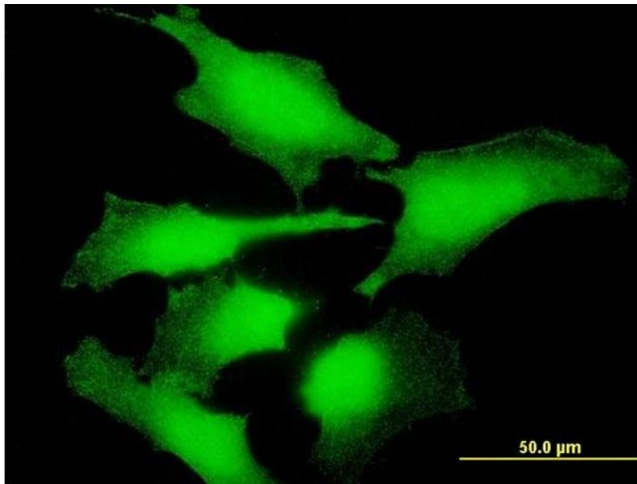
Western Blotting

Image 1. ENO1P MaxPab polyclonal antibody. Western Blot analysis of ENO1P expression in human kidney.



Western Blotting

Image 2. ENO1P MaxPab polyclonal antibody. Western Blot analysis of ENO1P expression in HepG2.



Immunofluorescence

Image 3. Immunofluorescence of purified MaxPab antibody to ENO1P on HeLa cell. [antibody concentration 10 ug/ml]

Please check the [product details page](#) for more images. Overall 4 images are available for ABIN515300.