



[Go to Product page](#)

Datasheet for ABIN515306
anti-ENO3 antibody (AA 1-434)

3 Images

Overview

| | |
|----------------------|-------------------------------------|
| Quantity: | 100 µg |
| Target: | ENO3 |
| Binding Specificity: | AA 1-434 |
| Reactivity: | Human |
| Host: | Mouse |
| Clonality: | Monoclonal |
| Conjugate: | This ENO3 antibody is un-conjugated |
| Application: | Western Blotting (WB), ELISA |

Product Details

| | |
|------------|---|
| Purpose: | Mouse monoclonal antibody raised against a full-length recombinant ENO3. |
| Immunogen: | ENO3 (AAH17249, 1 a.a. ~ 434 a.a) full-length recombinant protein with GST tag. MW of the GST tag alone is 26 KDa. |
| Sequence: | MAMQKIFARE ILDSRGNPTV EVDLHTAKGR FRAAVPSGAS TGIYEALRLR DGDKGRYL GK GVLKAVENIN STLGPALLQK KLSVADQEKV DKFMIELDGT ENKSKFGANA ILGVSLAVCK AGAAEKGVPL YRHIADLAGN PDLILPVPAF NVINGGSHAG NKLAMQEFMI LPVGASSFKE AMRIGAEVYH HLGKVIKAKY GKDATNVGDE GGFAPNILEN NEALELLKTA IQAAGYPDKV VIGMDVAASE FYRNGKYDLD FKSPDDPARH ITGEKLGELY KSFKNYPVV SIEDPFDQDD WATWTSFLSG VNIQIVGDDL TVTNPKRIAQ AVEKKACNCL LLKVNQIGSV TESIQAACKLA QSNQGWGMVMS HRSGETEDTF IADLVVGLCT GQIKTGAPCR SERLAKYNQL MRIEEEALGDK AIFAGRKFRN PKAK |

Product Details

| | |
|-------------------|--|
| Clone: | 3C6 |
| Isotype: | IgG2b |
| Cross-Reactivity: | Human |
| Characteristics: | Antibody Reactive Against Recombinant Protein. |

Target Details

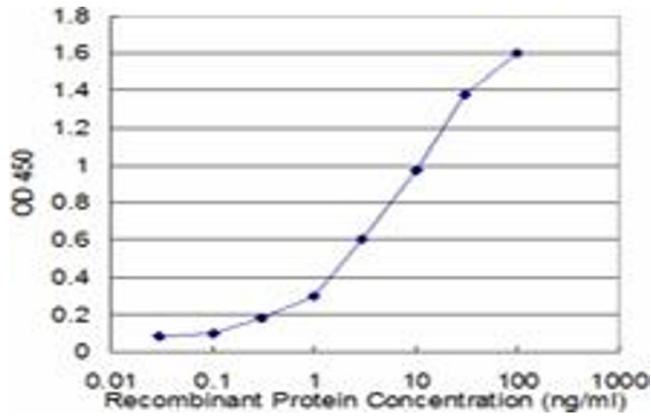
| | |
|-------------------|---|
| Target: | ENO3 |
| Alternative Name: | ENO3 (ENO3 Products) |
| Background: | Full Gene Name: enolase 3 (beta, muscle) Synonyms: MSE |
| Gene ID: | 2027 |

Application Details

| | |
|--------------------|--|
| Application Notes: | Optimal working dilution should be determined by the investigator. |
| Restrictions: | For Research Use only |

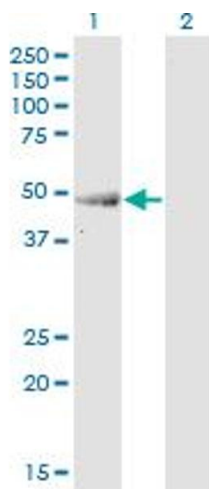
Handling

| | |
|------------------|--|
| Buffer: | In 1x PBS, pH 7.4 |
| Handling Advice: | Aliquot to avoid repeated freezing and thawing. |
| Storage: | -20 °C |
| Storage Comment: | Store at -20°C or lower. Aliquot to avoid repeated freezing and thawing. |



ELISA

Image 1. Detection limit for recombinant GST tagged ENO3 is approximately 0.3ng/ml as a capture antibody.

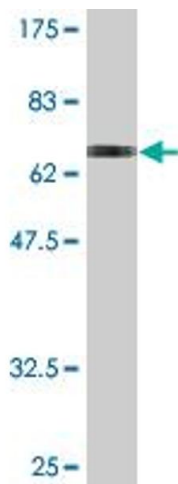


Western Blotting

Image 2. Western Blot analysis of ENO3 expression in transfected 293T cell line by ENO3 monoclonal antibody (M04), clone 3C6.

Lane 1: ENO3 transfected lysate(46.9 KDa).

Lane 2: Non-transfected lysate.



Western Blotting

Image 3. Western Blot detection against Immunogen (73.48 KDa) .