



Datasheet for ABIN515309
anti-SLC29A1 antibody (AA 1-456)



[Go to Product page](#)

1 Image

Overview

Quantity:	50 µg
Target:	SLC29A1
Binding Specificity:	AA 1-456
Reactivity:	Human
Host:	Mouse
Clonality:	Polyclonal
Conjugate:	This SLC29A1 antibody is un-conjugated
Application:	Western Blotting (WB)

Product Details

Purpose:	Mouse polyclonal antibody raised against a full-length human SLC29A1 protein.
Immunogen:	SLC29A1 (NP_004946.1, 1 a.a. ~ 456 a.a) full-length human protein.
Sequence:	MTTSHQPQDR YKAVWLIFFM LGLGTLLPWN FFMTATQYFT NRLDMSQNVS LVTAELSKDA QASAAPAAPL PERNSLSAIF NNVMTLCAML PLLLFTYLNS FLHQRIPQSV RILGSLVAIL LVFLITAILV KVQLDALPFF VITMIKIVLI NSFGAILQGS LFGLAGLLPA SYTAPIMSGQ GLAGFFASVA MICAIASGSE LSESAFGYFI TACAVIILTI ICYLGLPRLE FYRYQQKLK EGPGEQETKL DLISKGEEPR AGKEESGVSV SNSQPTNESH SIKAILKNIS VLAFSVCFIF TITIGMFAV TVEVKSSIAG SSTWERYFIP VSCFLTFNIF DWLGRSLTAV FMWPGKDSRW LPSLVLARLV FVPLLLLCNI KPRRYLTVVF EHDAWFIFM AAFASNGYL ASLCMCFGPK KVKPAEAETA GAIMAFFLCL GLALGAVFSF LFRAIV
Cross-Reactivity:	Human

Product Details

Characteristics: Antibody reactive against mammalian transfected lysate.

Target Details

Target: SLC29A1

Alternative Name: SLC29A1 ([SLC29A1 Products](#))

Background: Full Gene Name: solute carrier family 29 (nucleoside transporters), member 1
Synonyms: ENT1,MGC1465,MGC3778

Gene ID: 2030

NCBI Accession: [NM_004955](#)

Pathways: [Carbohydrate Homeostasis](#), [Synaptic Membrane](#)

Application Details

Application Notes: Optimal working dilution should be determined by the investigator.

Restrictions: For Research Use only

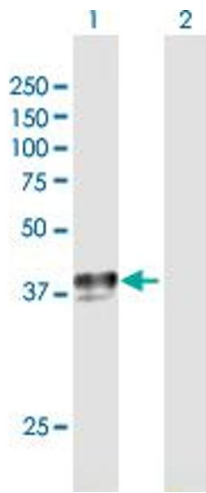
Handling

Buffer: In 1x PBS, pH 7.4

Handling Advice: Aliquot to avoid repeated freezing and thawing.

Storage: -20 °C

Storage Comment: Store at -20°C or lower. Aliquot to avoid repeated freezing and thawing.



Western Blotting

Image 1. Western Blot analysis of SLC29A1 expression in transfected 293T cell line by SLC29A1 MaxPab polyclonal antibody.

Lane 1: SLC29A1 transfected lysate(50.16 KDa).

Lane 2: Non-transfected lysate.