



[Go to Product page](#)

Datasheet for ABIN515320
anti-EPB41L2 antibody (AA 1-633)

4 Images

Overview

Quantity:	50 µg
Target:	EPB41L2
Binding Specificity:	AA 1-633
Reactivity:	Human
Host:	Mouse
Clonality:	Polyclonal
Conjugate:	This EPB41L2 antibody is un-conjugated
Application:	Western Blotting (WB), Immunofluorescence (IF)

Product Details

Purpose:	Mouse polyclonal antibody raised against a full-length human EPB41L2 protein.
Immunogen:	EPB41L2 (AAH34718.1, 1 a.a. ~ 633 a.a) full-length human protein.
Sequence:	MTTEVGSVSE VKKDSSQLGT DATKEKPKEV AENQQNQSSD PEEKGSQPP PAESQSSLR RQKREKETSE SRGISRFIPP WLKKQKSYTL VVAKDGGDKK EPTQAVVEEQ VLDKEEPLPE EQRQAKGDAE EMAQKKQEIK VEVKEEKPSV SKEEKPSVSK VEMQPTELVS KEREKVKET QEDKLEGGAA KRETKEVQTN ELKAEKASQK VTKKTKTVQC KVTLLDGTEY SCDLEKHAKG QVLFDKVCEH LNLLEKDYFG LLFQESPEQK NWLDPAKEIK RQLRNLPWLF TFNVKFYPPD PSQLTEDITR YFLCLQLRQD IASGRLPCSF VTHALLGSYT LQAE LGDYDP EEHGSIDLSE FQFAPTQTKE LEEKVAELHK THRGLSPAQA DSQFLENAKR LSMYGVDLHH AKDSEGVDIK LGVCANGLLI YKDRLRINRF AWPKILKISY KRSNFYIKVR PAELEQFEST IGFKLPNHRA AKRLWKVCVE HHTFYRLVSP EQPPKAKFLT LGSKFRYSGR TQAQTRQAST LIDRPAPHFE RTSSKRVSRS LDGAPIGVMD QSLMKDFPGA AGEISAYGPG LVSIADVQDG DGRREVRSP

Product Details

KAPHLQLIEG KSSHETLNIV EEKSGQRLGK TKE

Cross-Reactivity: Human, Mouse

Characteristics: Antibody reactive against mammalian transfected lysate.

Target Details

Target: EPB41L2

Alternative Name: EPB41L2 ([EPB41L2 Products](#))

Background: Full Gene Name: erythrocyte membrane protein band 4.1-like 2
Synonyms: 4.1-G,DKFZp781D1972,DKFZp781H1755

Gene ID: 2037

Application Details

Application Notes: Optimal working dilution should be determined by the investigator.

Restrictions: For Research Use only

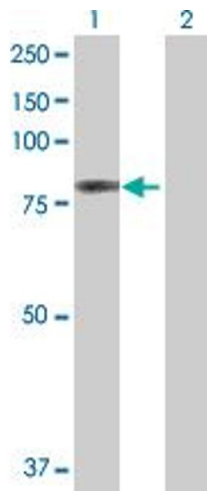
Handling

Buffer: In 1x PBS, pH 7.4

Handling Advice: Aliquot to avoid repeated freezing and thawing.

Storage: -20 °C

Storage Comment: Store at -20°C or lower. Aliquot to avoid repeated freezing and thawing.

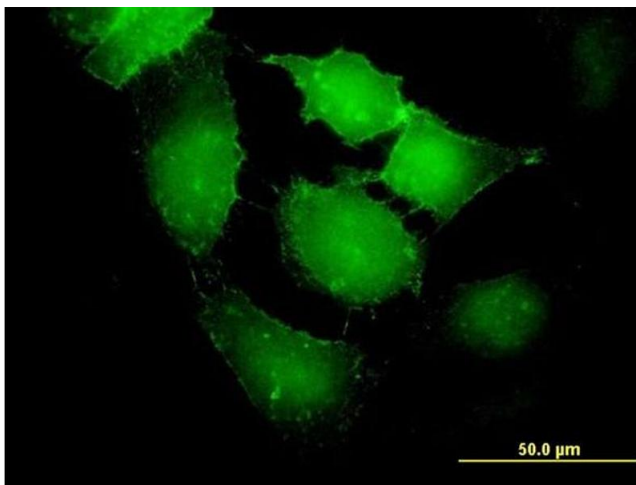


Western Blotting

Image 1. Western Blot analysis of EPB41L2 expression in transfected 293T cell line by EPB41L2 MaxPab polyclonal antibody.

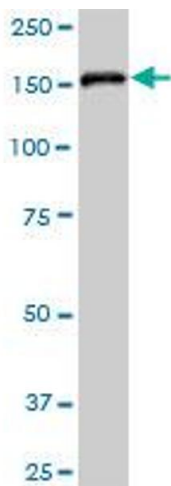
Lane 1: EPB41L2 transfected lysate(69.63 KDa).

Lane 2: Non-transfected lysate.



Immunofluorescence

Image 2. Immunofluorescence of purified MaxPab antibody to EPB41L2 on HeLa cell. [antibody concentration 10 ug/ml]



Western Blotting

Image 3. EPB41L2 MaxPab polyclonal antibody. Western Blot analysis of EPB41L2 expression in HepG2.

Please check the [product details page](#) for more images. Overall 4 images are available for ABIN515320.