



Datasheet for ABIN515326
anti-Stomatin antibody (AA 1-288)



[Go to Product page](#)

1 Image

Overview

Quantity:	50 µg
Target:	Stomatin (STOM)
Binding Specificity:	AA 1-288
Reactivity:	Human
Host:	Mouse
Clonality:	Polyclonal
Conjugate:	This Stomatin antibody is un-conjugated
Application:	Western Blotting (WB)

Product Details

Purpose:	Mouse polyclonal antibody raised against a full-length human STOM protein.
Immunogen:	STOM (NP_004090.4, 1 a.a. ~ 288 a.a) full-length human protein.
Sequence:	MAEKRHTRDS EAQLRPDSFK DSPSKGLGPC GWILVAFSFL FTVITFPISI WMCIKIIKEY ERAIIFRLGR ILQGGAKGPG LFFILPCTDS FIKVDMRTIS FDIPPQEILT KDSVTISVDG VVYYRVQNAT LAVANITNAD SATRLLAQT LRVNLGTKNL SQILSDREEI AHNMQSTLDD ATDAWGIKVE RVEIKDVKLP VQLQRAMAAE AEASREARAK VIAAEGEMNA SRALKEASMV ITESPAALQL RYLQTLTTIA AEKNSTIVFP LPIDMLQGII GAKHSHLG
Cross-Reactivity:	Human
Characteristics:	Antibody reactive against mammalian transfected lysate.

Target Details

Target:	Stomatin (STOM)
Alternative Name:	STOM (STOM Products)
Background:	Full Gene Name: stomatin Synonyms: BND7,EPB7,EPB72
Gene ID:	2040
NCBI Accession:	NM_004099
Pathways:	SARS-CoV-2 Protein Interactome

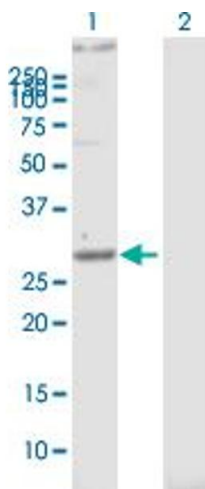
Application Details

Application Notes:	Optimal working dilution should be determined by the investigator.
Restrictions:	For Research Use only

Handling

Buffer:	In 1x PBS, pH 7.4
Handling Advice:	Aliquot to avoid repeated freezing and thawing.
Storage:	-20 °C
Storage Comment:	Store at -20°C or lower. Aliquot to avoid repeated freezing and thawing.

Images



Western Blotting

Image 1. Western Blot analysis of STOM expression in transfected 293T cell line by STOM MaxPab polyclonal antibody.

Lane 1: STOM transfected lysate(31.68 kDa).

Lane 2: Non-transfected lysate.