

Datasheet for ABIN515334
anti-EPH Receptor A7 antibody (AA 1-279)



[Go to Product page](#)

2 Images

Overview

Quantity:	200 µL
Target:	EPH Receptor A7 (EPHA7)
Binding Specificity:	AA 1-279
Reactivity:	Human
Host:	Mouse
Clonality:	Monoclonal
Conjugate:	This EPH Receptor A7 antibody is un-conjugated
Application:	Western Blotting (WB), ELISA

Product Details

Purpose:	Mouse monoclonal antibody raised against a full-length recombinant EPHA7.
Immunogen:	EPHA7 (AAH27940.1, 1 a.a. ~ 279 a.a) full-length recombinant protein with GST tag. MW of the GST tag alone is 26 KDa.
Sequence:	MVFQTRYPSW IILCYIWLLR FAHTGEAQAA KEVLLLD SKA QQTELEWISS PPNGWEEISG LDENYTPIRT YQVCQVMEPN QNNWLRTNWI SKGNAQRIFV ELKFTLRDCN SLPGVLTGCK ETFNLYYYET DYDTGRNVRE NLYVKIDTIA ADESFTQGDL GERKMKLNTE VREIGPLSKK GFYLAFQDVG ACIALVSVKV YYKWCWSIIE NLAIFPDTVT GSEFSSLVEV RGTCVSSAEE EAENAPRMHC SAEGEWLVPI GKCICKAGYQ QKGDTCCEK
Clone:	1G11
Isotype:	IgM kappa
Cross-Reactivity:	Human

Target Details

Target:	EPH Receptor A7 (EPHA7)
Alternative Name:	EPHA7 (EPHA7 Products)
Background:	Full Gene Name: EPH receptor A7 Synonyms: EHK3,HEK11
Gene ID:	2045
Pathways:	RTK Signaling

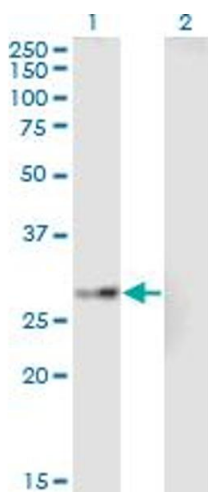
Application Details

Application Notes:	Optimal working dilution should be determined by the investigator.
Comment:	Product Quality tested by: Antibody Reactive Against Recombinant Protein.
Restrictions:	For Research Use only

Handling

Format:	Liquid
Buffer:	In ascites fluid
Handling Advice:	Aliquot to avoid repeated freezing and thawing.
Storage:	-20 °C
Storage Comment:	Store at -20°C or lower. Aliquot to avoid repeated freezing and thawing.

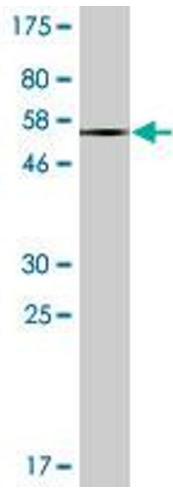
Images



Western Blotting

Image 1. Western Blot analysis of EPHA7 expression in transfected 293T cell line by EPHA7 monoclonal antibody (M01A), clone 1G11.

Lane 1: EPHA7 transfected lysate (Predicted MW: 31.8 kDa).
Lane 2: Non-transfected lysate.



Western Blotting

Image 2. Western Blot detection against Immunogen (56.32 kDa).