



[Go to Product page](#)

Datasheet for ABIN515350  
**anti-EPHX1 antibody (AA 1-455)**

2 Images

Overview

Quantity:	100 µg
Target:	EPHX1
Binding Specificity:	AA 1-455
Reactivity:	Human
Host:	Rabbit
Clonality:	Polyclonal
Conjugate:	This EPHX1 antibody is un-conjugated
Application:	Western Blotting (WB), Immunofluorescence (IF)

Product Details

Purpose:	Rabbit polyclonal antibody raised against a full-length human EPHX1 protein.
Immunogen:	EPHX1 (AAH03567.1, 1 a.a. ~ 455 a.a) full-length human protein.
Sequence:	MWLEILLTSV LGFAIYWFIS RDKEETLPLE DGWWGPGTRS AAREDDSI RP FKVETSDEEI HDLHQRIDKF RFTPPLEDSC FHYGFNSNYL KKVISYWRNE FDWKKQVEIL NRYPHFKTKI EGLDIHFIHV KPPQLPAGHT PKPLLMVHGW PGSFYEFYKI IPLLTDPKNH GLSDEHVFVEV ICPSIPGYGF SEASSKKGFN SVATARIFYK LMLRLGFQEF YIQGGDWGSL ICTNMAQLVP SHVKGLHLNM ALVLSNFSTL TLLLGQRFRG FLGLTERDVE LLYPVKEKVF YSLMRESGYM HIQCTKPDTV GSALNDSPVG LAAYILEKFS TWTNTEFRYL EDGGLERKFS LDDLLTNVML YWTTGTIISS QRFYKENLGQ GWMTQKHERM KVVYPTGFSA PPFELLHTPE KWVRFKYPKL ISYSYMVRGG HFAAFEEPEL LAQDIRKFLS VLERQ
Cross-Reactivity:	Human

## Product Details

---

Characteristics: Antibody reactive against mammalian transfected lysate.

## Target Details

---

Target: EPHX1

Alternative Name: EPHX1 ([EPHX1 Products](#))

Background: Full Gene Name: epoxide hydrolase 1, microsomal (xenobiotic)  
Synonyms: EPHX,EPOX,MEH

Gene ID: 2052

NCBI Accession: [NM\\_000120](#)

## Application Details

---

Application Notes: Optimal working dilution should be determined by the investigator.

Restrictions: For Research Use only

## Handling

---

Buffer: In 1x PBS, pH 7.4

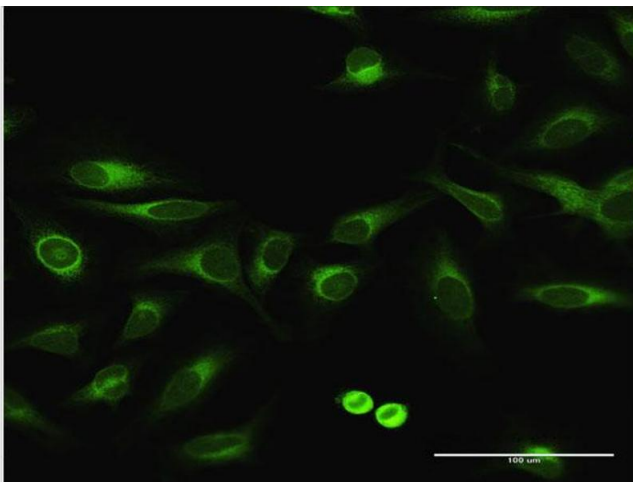
Handling Advice: Aliquot to avoid repeated freezing and thawing.

Storage: -20 °C

Storage Comment: Store at -20°C or lower. Aliquot to avoid repeated freezing and thawing.

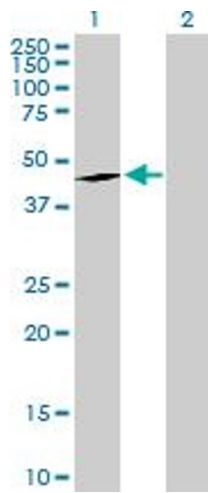
## Images

---



### Immunofluorescence

**Image 1.** Immunofluorescence of purified MaxPab antibody to EPHX1 on HeLa cell. [antibody concentration 10 ug/ml]



### Western Blotting

**Image 2.** Western Blot analysis of EPHX1 expression in transfected 293T cell line by EPHX1 MaxPab polyclonal antibody.

Lane 1: EPHX1 transfected lysate(52.90 kDa).

Lane 2: Non-transfected lysate.