



[Go to Product page](#)

Datasheet for ABIN515357
anti-STX2 antibody (AA 1-287)

2 Images

Overview

Quantity:	50 µg
Target:	STX2
Binding Specificity:	AA 1-287
Reactivity:	Human
Host:	Mouse
Clonality:	Polyclonal
Conjugate:	This STX2 antibody is un-conjugated
Application:	Western Blotting (WB)

Product Details

Purpose:	Mouse polyclonal antibody raised against a full-length human STX2 protein.
Immunogen:	STX2 (NP_001971.2, 1 a.a. ~ 287 a.a) full-length human protein.
Sequence:	MRDRLPDLTA CRKNDDGDTV VVEKDHFM DFFHQVEEIR NSIDKITQYV EEVKKNHSHI LSAPNPEGKI KEELEDLNKE IKKTANKIRA KLKAIEQSFD QDESGNRTSV DLRIRRTQHS VLSRKFVEAM AEYNEAQLF RERSKGRIQR QLEITGRTTT DDELEEMLES GKPSIFTSDI ISDSQITRQA LNEIESRHKD IMKLETSIRE LHEMFMDMAM FVETQGEMIN NIERNVMNAT DYVEHAKEET KKAIKYQSKA RRKLMFIIC VIVLLVILGI ILATTLS
Cross-Reactivity:	Human
Characteristics:	Antibody reactive against mammalian transfected lysate.

Target Details

Target:	STX2
Alternative Name:	STX2 (STX2 Products)
Background:	Full Gene Name: syntaxin 2 Synonyms: EPIM, EPM, MGC51014, STX2A, STX2B, STX2C
Gene ID:	2054
NCBI Accession:	NM_001980

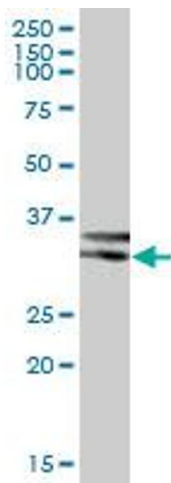
Application Details

Application Notes:	Optimal working dilution should be determined by the investigator.
Restrictions:	For Research Use only

Handling

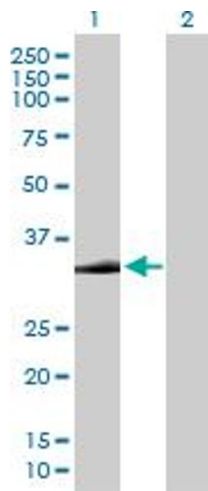
Buffer:	In 1x PBS, pH 7.4
Handling Advice:	Aliquot to avoid repeated freezing and thawing.
Storage:	-20 °C
Storage Comment:	Store at -20°C or lower. Aliquot to avoid repeated freezing and thawing.

Images



Western Blotting

Image 1. EPIM MaxPab polyclonal antibody. Western Blot analysis of EPIM expression in human kidney.



Western Blotting

Image 2. Western Blot analysis of STX2 expression in transfected 293T cell line by STX2 MaxPab polyclonal antibody.

Lane 1: EPIM transfected lysate(31.57 KDa).

Lane 2: Non-transfected lysate.