

Datasheet for ABIN515374
anti-ERBB3 antibody (AA 1-331)



[Go to Product page](#)

2 Images

Overview

Quantity:	100 µg
Target:	ERBB3
Binding Specificity:	AA 1-331
Reactivity:	Human
Host:	Rabbit
Clonality:	Polyclonal
Conjugate:	This ERBB3 antibody is un-conjugated
Application:	Western Blotting (WB), Proximity Ligation Assay (PLA)

Product Details

Purpose:	Rabbit polyclonal antibody raised against a full-length human ERBB3 protein.
Immunogen:	ERBB3 (AAH02706.1, 1 a.a. ~ 331 a.a) full-length human protein.
Sequence:	MRANDALQVL GLLFSLARGS EVGNSQAVCP GTLNGLSVTG DAENQYQTLY KLYERCEVVM GNLEIVLTGH NADLSFLQWI REVTGYVLVA MNEFSTLPLP NLRVVRGTQV YDGKFAIFVM LNYNTNSSHA LRQLRLTQLT EILSGGVYIE KNDKLCHMDT IDWRDIVRDR DAEIVVKDNG RSCPPCHEVC KGRCWGPGE DCQTLTKTIC APQCNGHCFCG PNPNCCHDE CAGGCSPQD TDCFACRHFN DSGACVPRCP QPLVYNKLTQ QLEPNPHTKY QYGGVCVASC PHNFVVDQTS CVRACPPDKM EVDKNGLKMC EPCGGLCPKA F
Cross-Reactivity:	Human
Characteristics:	Antibody reactive against mammalian transfected lysate.

Target Details

Target:	ERBB3
Alternative Name:	ERBB3 (ERBB3 Products)
Background:	Full Gene Name: v-erb-b2 erythroblastic leukemia viral oncogene homolog 3 (avian) Synonyms: ErbB-3,HER3,LCCS2,MDA-BF-1,MGC88033,c-erbB-3,c-erbB3,erbB3-S,p180-ErbB3,p45-sErbB3,p85-sErbB3
Gene ID:	2065
Pathways:	RTK Signaling , Fc-epsilon Receptor Signaling Pathway , EGFR Signaling Pathway , Neurotrophin Signaling Pathway

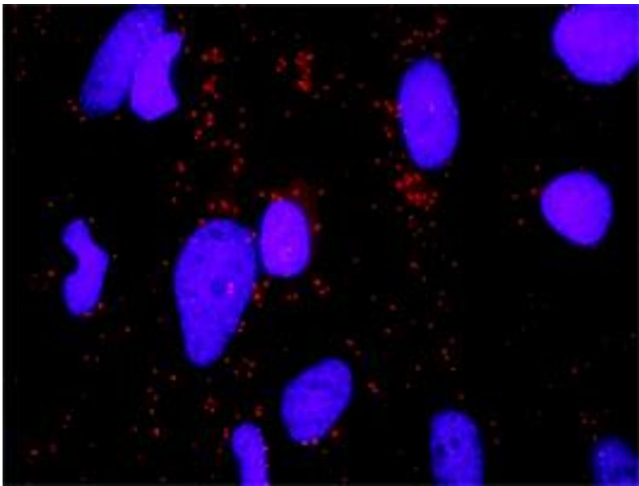
Application Details

Application Notes:	Optimal working dilution should be determined by the investigator.
Restrictions:	For Research Use only

Handling

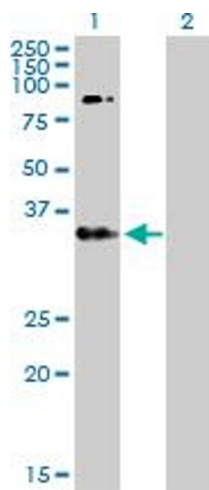
Buffer:	In 1x PBS, pH 7.4
Handling Advice:	Aliquot to avoid repeated freezing and thawing.
Storage:	-20 °C
Storage Comment:	Store at -20°C or lower. Aliquot to avoid repeated freezing and thawing.

Images



Proximity Ligation Assay

Image 1. Proximity Ligation Analysis of protein-protein interactions between ERBB3 and ERBB2. HeLa cells were stained with anti-ERBB3 rabbit purified polyclonal 1:1200 and anti-ERBB2 mouse monoclonal antibody 1:50. Each red dot represents the detection of protein-protein interaction complex, and nuclei were counterstained with DAPI (blue).



Western Blotting

Image 2. Western Blot analysis of ERBB3 expression in transfected 293T cell line by ERBB3 MaxPab polyclonal antibody.

Lane 1: ERBB3 transfected lysate(36.50 KDa).

Lane 2: Non-transfected lysate.