

Datasheet for ABIN515381
anti-ERCC1 antibody (AA 207-281)

3 Images

[Go to Product page](#)

Overview

Quantity:	100 µg
Target:	ERCC1
Binding Specificity:	AA 207-281
Reactivity:	Human
Host:	Mouse
Clonality:	Monoclonal
Conjugate:	This ERCC1 antibody is un-conjugated
Application:	Western Blotting (WB), ELISA, Immunofluorescence (IF)

Product Details

Purpose:	Mouse monoclonal antibody raised against a partial recombinant ERCC1.
Immunogen:	ERCC1 (AAH52813, 207 a.a. ~ 281 a.a) partial recombinant protein with GST tag. MW of the GST tag alone is 26 KDa.
Sequence:	RYLETYKAYE QKPADLLMEK LEQDFVSRVT ECLTTVKSVN KTDSQTLTLLTT FGSLEQLIAA SREDLALCPG VGPQK
Clone:	3A7
Isotype:	IgG2a
Cross-Reactivity:	Human
Characteristics:	Antibody Reactive Against Recombinant Protein.

Target Details

Target:	ERCC1
Alternative Name:	ERCC1 (ERCC1 Products)
Background:	Full Gene Name: excision repair cross-complementing rodent repair deficiency, complementation group 1 (includes overlapping antisense sequence) Synonyms: COFS4,UV20
Gene ID:	2067
Pathways:	DNA Damage Repair , Production of Molecular Mediator of Immune Response

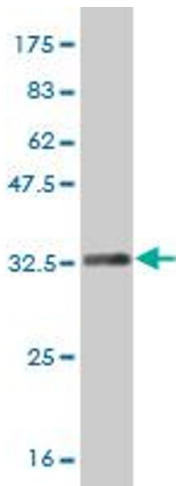
Application Details

Application Notes:	Optimal working dilution should be determined by the investigator.
Restrictions:	For Research Use only

Handling

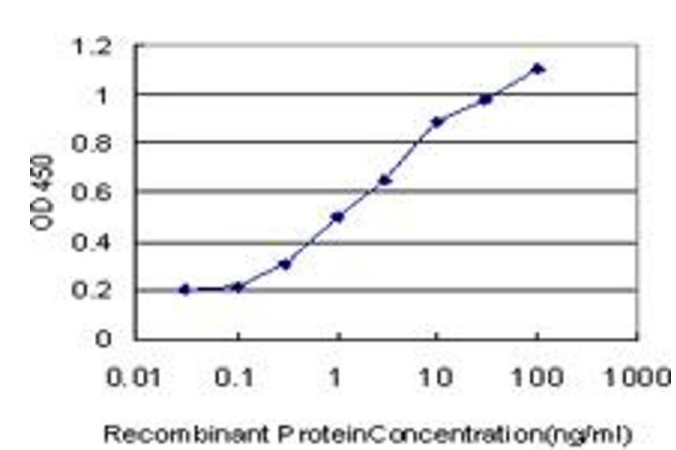
Buffer:	In 1x PBS, pH 7.4
Handling Advice:	Aliquot to avoid repeated freezing and thawing.
Storage:	-20 °C
Storage Comment:	Store at -20°C or lower. Aliquot to avoid repeated freezing and thawing.

Images



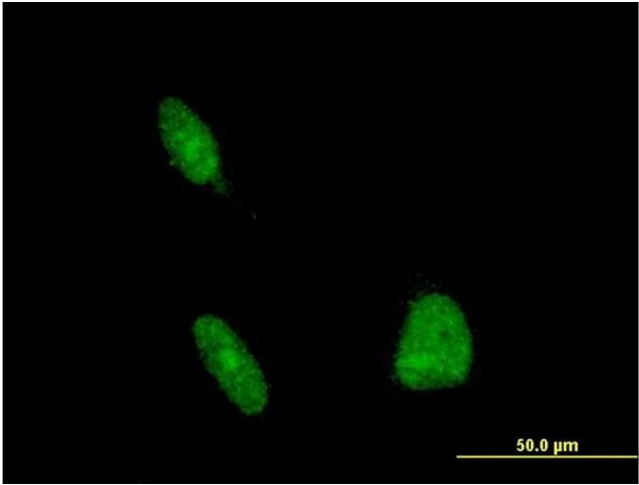
Western Blotting

Image 1. Western Blot detection against Immunogen (33.99 kDa) .



ELISA

Image 2. Detection limit for recombinant GST tagged ERCC1 is approximately 0.03ng/ml as a capture antibody.



Immunofluorescence

Image 3. Immunofluorescence of monoclonal antibody to ERCC1 on HeLa cell. [antibody concentration 10 ug/ml]