



[Go to Product page](#)

Datasheet for ABIN515395
anti-Esterase D antibody (AA 1-282)

1 Image

Overview

| | |
|----------------------|---|
| Quantity: | 50 µg |
| Target: | Esterase D (ESD) |
| Binding Specificity: | AA 1-282 |
| Reactivity: | Human |
| Host: | Mouse |
| Clonality: | Polyclonal |
| Conjugate: | This Esterase D antibody is un-conjugated |
| Application: | Western Blotting (WB) |

Product Details

| | |
|-------------------|---|
| Purpose: | Mouse polyclonal antibody raised against a full-length human ESD protein. |
| Immunogen: | ESD (AAH01169, 1 a.a. ~ 282 a.a) full-length human protein. |
| Sequence: | MALKQISSNK CFGGLQKVFE HDSVELNCKM KFAVYLPPKA ETGKCPALYW LSGLTCTEQN FISKSGYHQS ASEHGLLVIA PDTSPRGCNI KGEDESWDFG TGAGFYVDAT EDPWKTNYRM YSYVTEELPQ LINANFPVDP QRMSIFGHSM GGHGALICAL KNPGKYKSVS AFAPICNPVL CPWGKKAFFSG YLGTDQSKWK AYDATHLVKS YPGSQLDILI DQGKDDQFLL DGQLLPDNFI AACTEKKIPV VFRLQEDYDH SYYFIATFIT DHIRHHAKYL NA |
| Cross-Reactivity: | Human |
| Characteristics: | Antibody reactive against mammalian transfected lysate. |

Target Details

| | |
|-------------------|---|
| Target: | Esterase D (ESD) |
| Alternative Name: | ESD (ESD Products) |
| Background: | Full Gene Name: esterase D/formylglutathione hydrolase Synonyms: |
| Gene ID: | 2098 |

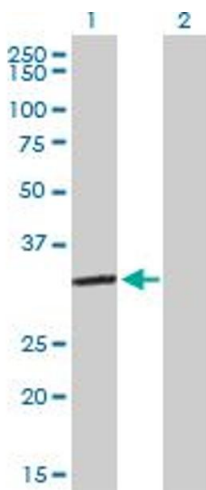
Application Details

| | |
|--------------------|--|
| Application Notes: | Optimal working dilution should be determined by the investigator. |
| Restrictions: | For Research Use only |

Handling

| | |
|------------------|--|
| Buffer: | In 1x PBS, pH 7.4 |
| Handling Advice: | Aliquot to avoid repeated freezing and thawing. |
| Storage: | -20 °C |
| Storage Comment: | Store at -20°C or lower. Aliquot to avoid repeated freezing and thawing. |

Images



Western Blotting

Image 1. Western Blot analysis of ESD expression in transfected 293T cell line by ESD MaxPab polyclonal antibody.

Lane 1: ESD transfected lysate(31.02 KDa).

Lane 2: Non-transfected lysate.