



[Go to Product page](#)

Datasheet for ABIN515402
anti-ESR2 antibody (AA 22-121)

3 Images

Overview

Quantity:	100 µg
Target:	ESR2
Binding Specificity:	AA 22-121
Reactivity:	Human
Host:	Mouse
Clonality:	Monoclonal
Conjugate:	This ESR2 antibody is un-conjugated
Application:	Western Blotting (WB), ELISA, Immunofluorescence (IF)

Product Details

Purpose:	Mouse monoclonal antibody raised against a partial recombinant ESR2.
Immunogen:	ESR2 (NP_001428, 22 a.a. ~ 121 a.a) partial recombinant protein with GST tag. MW of the GST tag alone is 26 KDa.
Sequence:	ILPLEHGSY IPSSYVDSHH EYPAMTFYSP AVMNYSIPSN VTNLEGGPGR QTTSPNVLWP TPGHLSPVLV HRQLSHLYAE POKSPWCEAR SLEHTLPVNR
Clone:	3F3
Isotype:	IgG2b
Cross-Reactivity:	Human
Characteristics:	Antibody Reactive Against Recombinant Protein.

Target Details

Target:	ESR2
Alternative Name:	ESR2 (ESR2 Products)
Background:	Full Gene Name: estrogen receptor 2 (ER beta) Synonyms: ER-BETA,ESR-BETA,ESRB,ESTRB,Erb,NR3A2
Gene ID:	2100
NCBI Accession:	NM_001437
Pathways:	Nuclear Receptor Transcription Pathway , EGFR Signaling Pathway , Intracellular Steroid Hormone Receptor Signaling Pathway , Steroid Hormone Mediated Signaling Pathway , Regulation of Intracellular Steroid Hormone Receptor Signaling

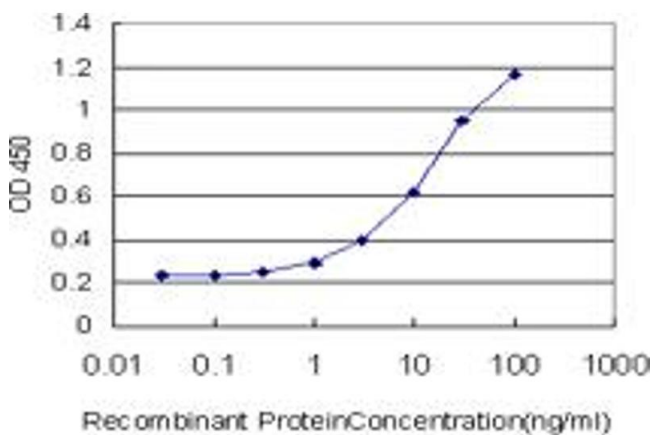
Application Details

Application Notes:	Optimal working dilution should be determined by the investigator.
Restrictions:	For Research Use only

Handling

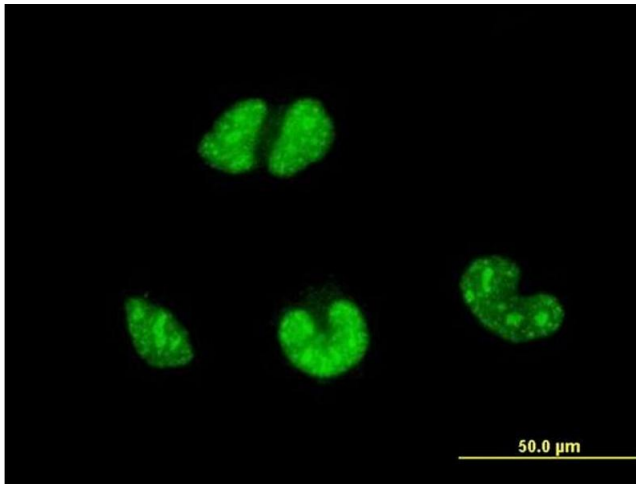
Buffer:	In 1x PBS, pH 7.4
Handling Advice:	Aliquot to avoid repeated freezing and thawing.
Storage:	-20 °C
Storage Comment:	Store at -20°C or lower. Aliquot to avoid repeated freezing and thawing.

Images



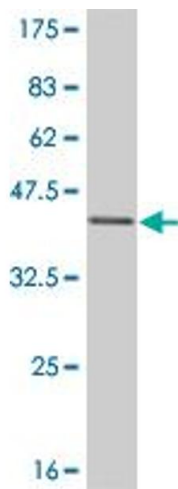
ELISA

Image 1. Detection limit for recombinant GST tagged ESR2 is approximately 0.3ng/ml as a capture antibody.



Immunofluorescence

Image 2. Immunofluorescence of monoclonal antibody to ESR2 on HeLa cell. [antibody concentration 10 ug/ml]



Western Blotting

Image 3. Western Blot detection against Immunogen (36.74 kDa).