



[Go to Product page](#)

Datasheet for ABIN515409
anti-ETF1 antibody (AA 338-437)

4 Images

Overview

Quantity:	100 µg
Target:	ETF1
Binding Specificity:	AA 338-437
Reactivity:	Human
Host:	Mouse
Clonality:	Monoclonal
Conjugate:	This ETF1 antibody is un-conjugated
Application:	Western Blotting (WB), ELISA

Product Details

Purpose:	Mouse monoclonal antibody raised against a partial recombinant ETF1.
Immunogen:	ETF1 (NP_004721.1, 338 a.a. ~ 437 a.a) partial recombinant protein with GST tag. MW of the GST tag alone is 26 KDa.
Sequence:	TEEEKILYLT PEQEKDKSHF TDKETGQEHE LIESMPLLEW FANNYKKFGA TLEIVTDKSQ EGSQFVKGFG GIGGILRYRV DFQGMFYQGG DDEFFDLDDY
Clone:	2H4
Isotype:	IgG2b
Cross-Reactivity:	Human
Characteristics:	Antibody Reactive Against Recombinant Protein.

Target Details

Target:	ETF1
Alternative Name:	ETF1 (ETF1 Products)
Background:	Full Gene Name: eukaryotic translation termination factor 1 Synonyms: D5S1995,ERF,ERF1,MGC111066,RF1,SUP45L1,TB3-1
Gene ID:	2107
NCBI Accession:	NM_004730

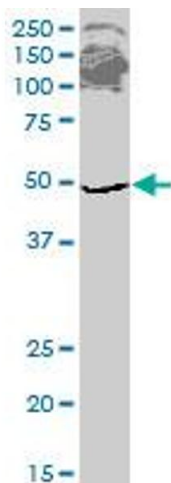
Application Details

Application Notes:	Optimal working dilution should be determined by the investigator.
Restrictions:	For Research Use only

Handling

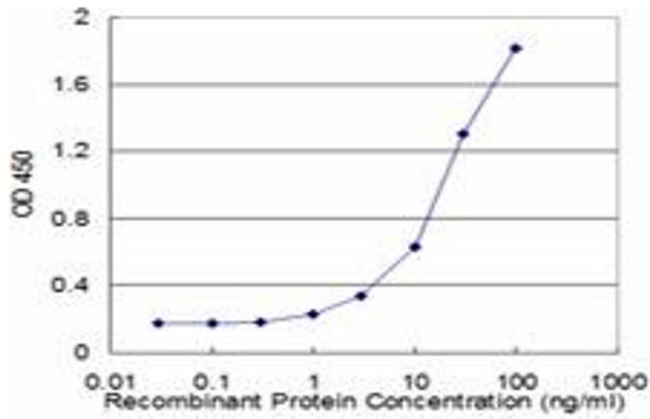
Buffer:	In 1x PBS, pH 7.4
Handling Advice:	Aliquot to avoid repeated freezing and thawing.
Storage:	-20 °C
Storage Comment:	Store at -20°C or lower. Aliquot to avoid repeated freezing and thawing.

Images



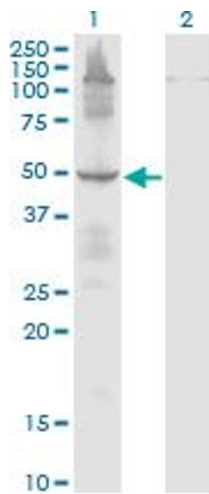
Western Blotting

Image 1. ETF1 monoclonal antibody (M02), clone 2H4.
Western Blot analysis of ETF1 expression in HepG2 .



ELISA

Image 2. Detection limit for recombinant GST tagged ETF1 is approximately 1ng/ml as a capture antibody.



Western Blotting

Image 3. Western Blot analysis of ETF1 expression in transfected 293T cell line by ETF1 monoclonal antibody (M02), clone 2H4.

Lane 1: ETF1 transfected lysate (Predicted MW: 49 KDa).

Lane 2: Non-transfected lysate.

Please check the [product details page](#) for more images. Overall 4 images are available for ABIN515409.