



Datasheet for ABIN515410
anti-ETFA antibody (AA 1-333)



[Go to Product page](#)

1 Image

Overview

Quantity:	100 µg
Target:	ETFA
Binding Specificity:	AA 1-333
Reactivity:	Human
Host:	Mouse
Clonality:	Monoclonal
Conjugate:	This ETFA antibody is un-conjugated
Application:	ELISA

Product Details

Purpose:	Mouse monoclonal antibody raised against a full-length recombinant ETFA.
Immunogen:	ETFA (AAH15526, 1 a.a. ~ 333 a.a) full-length recombinant protein with GST tag. MW of the GST tag alone is 26 KDa.
Sequence:	MFRAAAPGQL RRAASLLRFQ STLVIAEHAN DSLAPITLNT ITAATRLGGE VSCLVAGTKC DKVAQDLCKV AGIAKVLVAQ HDVYKGLLPE ELTPLILATQ KQFNYTHICA GASAFGKNLL PRVAAKLEVA PISDIIAIKS PDTFVRTIYA GNALCTVKCD EKVKVFSVRG TSFDAAATSG GSASSEKASS TSPVEISEWL DQKLTKSDRP ELTGAKVVVS GGRGLKSGEN FKLLYDLADQ LHAAVGASRA AVDAGFVPND MQVGQTGKIV APELYIAVGI SGAIQHLAGM KDSKTIVAIN KDPEAPIFQV ADYGIVADLF KVVPEMTEIL KKK
Clone:	2A5
Isotype:	IgG2a

Product Details

Cross-Reactivity:	Human
Characteristics:	Antibody Reactive Against Recombinant Protein.

Target Details

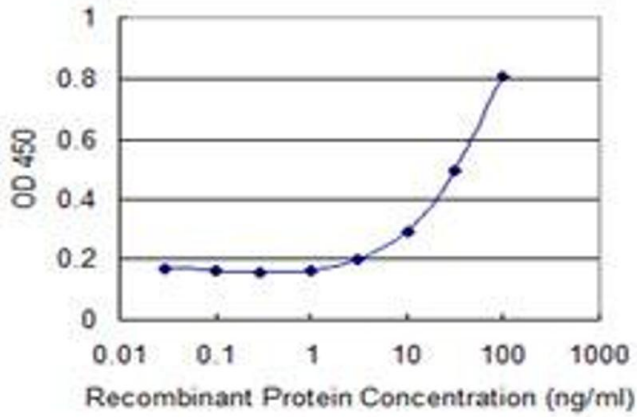
Target:	ETFA
Alternative Name:	ETFA (ETFA Products)
Background:	Full Gene Name: electron-transfer-flavoprotein, alpha polypeptide Synonyms: EMA,GA2,MADD
Gene ID:	2108
Pathways:	SARS-CoV-2 Protein Interactome

Application Details

Application Notes:	Optimal working dilution should be determined by the investigator.
Restrictions:	For Research Use only

Handling

Buffer:	In 1x PBS, pH 7.4
Handling Advice:	Aliquot to avoid repeated freezing and thawing.
Storage:	-20 °C
Storage Comment:	Store at -20°C or lower. Aliquot to avoid repeated freezing and thawing.



ELISA

Image 1. Detection limit for recombinant GST tagged ETFA is 1 ng/ml as a capture antibody.