



[Go to Product page](#)

Datasheet for ABIN515424  
**anti-EWSR1 antibody (AA 358-453)**

3 Images

Overview

|                      |   |
|----------------------|---|
| Quantity:            | 100 µg  |
| Target:              | EWSR1   |
| Binding Specificity: | AA 358-453  |
| Reactivity:          | Human   |
| Host:                | Mouse   |
| Clonality:           | Monoclonal  |
| Conjugate:           | This EWSR1 antibody is un-conjugated                  |
| Application:         | Western Blotting (WB), ELISA, Immunofluorescence (IF) |

Product Details

|                   |  |
|-------------------|--|
| Purpose:          | Mouse monoclonal antibody raised against a partial recombinant EWSR1.  |
| Immunogen:        | EWSR1 (NP_005234, 358 a.a. ~ 453 a.a) partial recombinant protein with GST tag. MW of the GST tag alone is 26 KDa. |
| Sequence:         | SDNSAIYVQG LNSVTLDDL ADFFKQCGVV KMNKRTGQPM IHIYLDKETG KPKGDATVSY<br>EDPPTAKAAV EWFDGKDFQG SKLKVSLARK KPPMNS        |
| Clone:            | 3A9  |
| Isotype:          | IgG1   |
| Cross-Reactivity: | Human  |
| Characteristics:  | Antibody Reactive Against Recombinant Protein.   |

## Target Details

|                   |  |
|-------------------|--|
| Target:           | EWSR1  |
| Alternative Name: | EWSR1 ( <a href="#">EWSR1 Products</a> )                           |
| Background:       | Full Gene Name: Ewing sarcoma breakpoint region 1<br>Synonyms: EWS |
| Gene ID:          | 2130   |
| NCBI Accession:   | <a href="#">NM_005243</a>  |

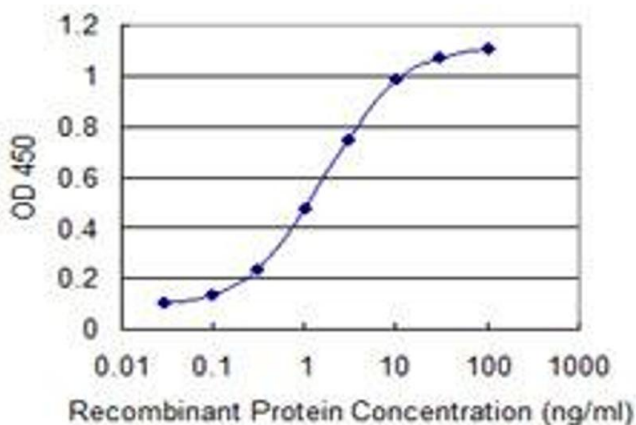
## Application Details

|                    |  |
|--------------------|--|
| Application Notes: | Optimal working dilution should be determined by the investigator. |
| Restrictions:      | For Research Use only  |

## Handling

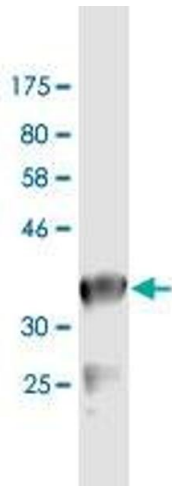
|                  |  |
|------------------|--|
| Buffer:          | In 1x PBS, pH 7.4  |
| Handling Advice: | Aliquot to avoid repeated freezing and thawing.                          |
| Storage:         | -20 °C   |
| Storage Comment: | Store at -20°C or lower. Aliquot to avoid repeated freezing and thawing. |

## Images



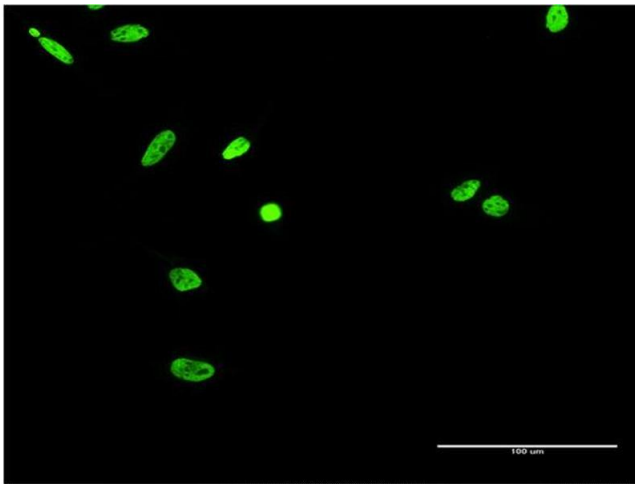
### ELISA

**Image 1.** Detection limit for recombinant GST tagged EWSR1 is 0.03 ng/ml as a capture antibody.



### Western Blotting

**Image 2.** Western Blot detection against Immunogen (36.3 KDa).



### Immunofluorescence

**Image 3.** Immunofluorescence of monoclonal antibody to EWSR1 on HeLa cell. [antibody concentration 10 ug/ml]