



[Go to Product page](#)

Datasheet for ABIN515442

## anti-PAR1 antibody (AA 42-102)

3 Images

1 Publication

### Overview

Quantity:	100 µg
Target:	PAR1 (F2R)
Binding Specificity:	AA 42-102
Reactivity:	Human
Host:	Mouse
Clonality:	Monoclonal
Conjugate:	This PAR1 antibody is un-conjugated
Application:	Western Blotting (WB), ELISA, Proximity Ligation Assay (PLA)

### Product Details

Purpose:	Mouse monoclonal antibody raised against a partial recombinant F2R.
Immunogen:	F2R (NP_001983.1, 42 a.a. ~ 102 a.a) partial recombinant protein with GST tag. MW of the GST tag alone is 26 KDa.
Sequence:	SFLLRNPNDK YEPFWEDEEK NESGLTEYRL VSINKSSPLQ KQLPAFISED ASGYLTSSWL T
Clone:	2C5
Isotype:	IgG2b
Cross-Reactivity:	Human
Characteristics:	Antibody Reactive Against Recombinant Protein.

## Target Details

---

Target:	PAR1 (F2R)
Alternative Name:	F2R ( <a href="#">F2R Products</a> )
Background:	Full Gene Name: coagulation factor II (thrombin) receptor Synonyms: CF2R,HTR,PAR1,TR
Gene ID:	2149
NCBI Accession:	<a href="#">NM_001992</a>
Pathways:	<a href="#">Nuclear Receptor Transcription Pathway</a> , <a href="#">Skeletal Muscle Fiber Development</a> , <a href="#">Positive Regulation of Endopeptidase Activity</a> , <a href="#">Protein targeting to Nucleus</a>

## Application Details

---

Application Notes:	Optimal working dilution should be determined by the investigator.
Restrictions:	For Research Use only

## Handling

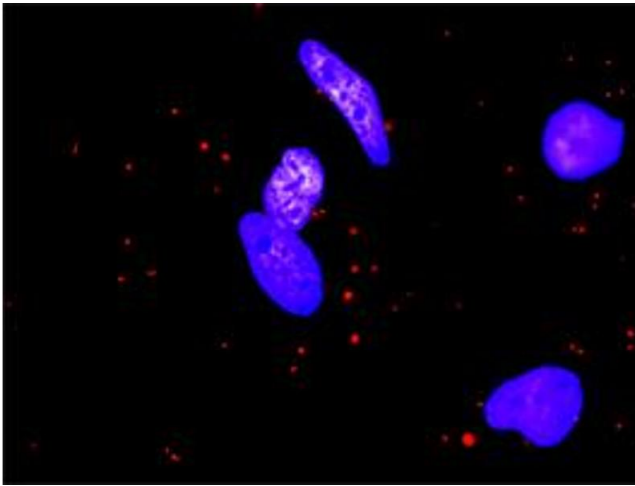
---

Buffer:	In 1x PBS, pH 7.4
Handling Advice:	Aliquot to avoid repeated freezing and thawing.
Storage:	-20 °C
Storage Comment:	Store at -20°C or lower. Aliquot to avoid repeated freezing and thawing.

## Publications

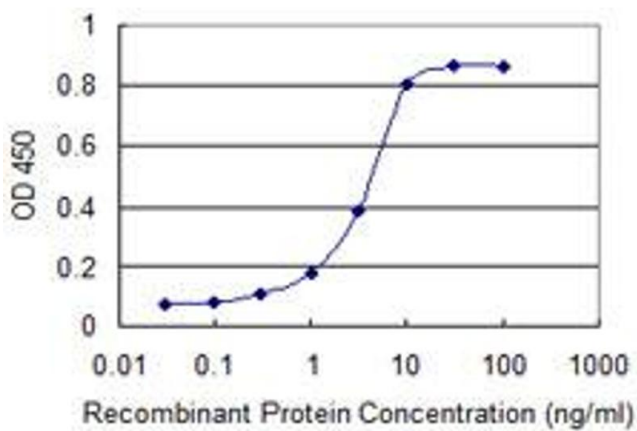
---

Product cited in:	Fazzini, DAntongiovanni, Giusti, Da Valle, Ciregia, Piano, Caputo, DUrsi, Gargini, Lucacchini, Mazzoni: "Altered protease-activated receptor-1 expression and signaling in a malignant pleural mesothelioma cell line, NCI-H28, with homozygous deletion of the $\beta$ -catenin gene." in: <b>PLoS ONE</b> , Vol. 9, Issue 11, pp. e111550, (2014) ( <a href="#">PubMed</a> ).
-------------------	---



### Proximity Ligation Assay

**Image 1.** Proximity Ligation Analysis of protein-protein interactions between MMP1 and F2R. HeLa cells were stained with anti-MMP1 rabbit purified polyclonal 1:1200 and anti-F2R mouse monoclonal antibody 1:50. Each red dot represents the detection of protein-protein interaction complex, and nuclei were counterstained with DAPI (blue).



### ELISA

**Image 2.** Detection limit for recombinant GST tagged F2R is 0.1 ng/ml as a capture antibody.



### Western Blotting

**Image 3.** Western Blot detection against Immunogen (32.45 kDa).