

Datasheet for ABIN515453
anti-Factor VIII antibody (AA 213-312)[Go to Product page](#)

2 Images

Overview

Quantity:	100 µg
Target:	Factor VIII (F8)
Binding Specificity:	AA 213-312
Reactivity:	Human
Host:	Mouse
Clonality:	Monoclonal
Conjugate:	This Factor VIII antibody is un-conjugated
Application:	ELISA, Proximity Ligation Assay (PLA)

Product Details

Purpose:	Mouse monoclonal antibody raised against a partial recombinant F8.
Immunogen:	F8 (NP_000123, 213 a.a. ~ 312 a.a) partial recombinant protein with GST tag. MW of the GST tag alone is 26 KDa.
Sequence:	KFILLFAVFD EGKSWHSETK NSLMQDRDAA SARAWPKMHT VNGYVNRSLP GLIGCHRKSV YWHVIGMGTT PEVHSIFLEG HTFLVRNHRQ ASLEISPITF
Clone:	1E8
Isotype:	IgG2b
Cross-Reactivity:	Human
Characteristics:	Antibody Reactive Against Recombinant Protein.

Target Details

Target:	Factor VIII (F8)
Alternative Name:	F8 (F8 Products)
Background:	Full Gene Name: coagulation factor VIII, procoagulant component Synonyms: AHF,DXS1253E,F8B,F8C,FVIII,HEMA
Gene ID:	2157
NCBI Accession:	NM_000132

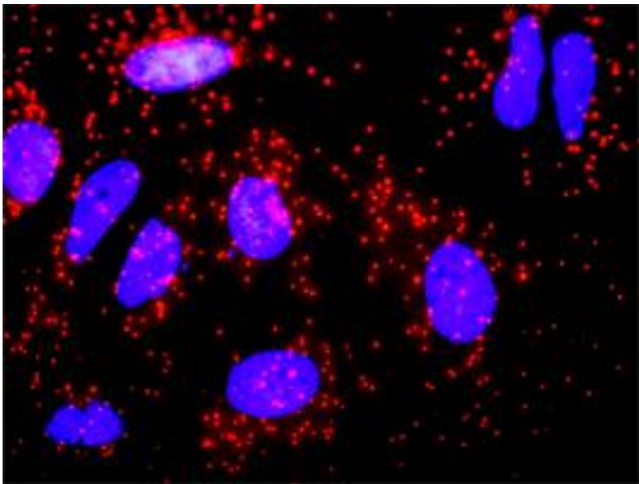
Application Details

Application Notes:	Optimal working dilution should be determined by the investigator.
Restrictions:	For Research Use only

Handling

Buffer:	In 1x PBS, pH 7.4
Handling Advice:	Aliquot to avoid repeated freezing and thawing.
Storage:	-20 °C
Storage Comment:	Store at -20°C or lower. Aliquot to avoid repeated freezing and thawing.

Images



Proximity Ligation Assay

Image 1. Proximity Ligation Analysis of protein-protein interactions between CALR and F8. HeLa cells were stained with anti-CALR rabbit purified polyclonal 1:1200 and anti-F8 mouse monoclonal antibody 1:50. Each red dot represents the detection of protein-protein interaction complex, and nuclei were counterstained with DAPI (blue).

ELISA

Image 2. Detection limit for recombinant GST tagged F8 is approximately 3ng/ml as a capture antibody.

