



[Go to Product page](#)

Datasheet for ABIN515527

anti-Fibulin 1 antibody (AA 1-683)

2 Images

Overview

Quantity:	50 µL
Target:	Fibulin 1 (FBLN1)
Binding Specificity:	AA 1-683
Reactivity:	Human
Host:	Mouse
Clonality:	Polyclonal
Conjugate:	This Fibulin 1 antibody is un-conjugated
Application:	Western Blotting (WB)

Product Details

Purpose:	Mouse polyclonal antibody raised against a full-length human FBLN1 protein.
Immunogen:	FBLN1 (AAH22497.1, 1 a.a. ~ 683 a.a) full-length human protein.
Sequence:	MERAAPSRRV PLQLLLLGGL ALLAAGVDAD VLEACCADG HRMATHQKDC SLPYATESKE CRMVQEQCCH SQLEELHCAT GISLANEQDR CATPHGDNAS LEATFVKRCC HCCLLGRAAQ AQQQSCEYSL MVGYQCGQVF RACCVKSQET GDLDVGGGLQE TDKIIEVEEEE QEDPYLNDRC RGGGPKQQC RDTGDEVVCS CFVGYQLLSD GVSCEDVNEC ITGSHSCRLG ESCINTVGSF RCQRDSSCGT GYELTEDNSC KDIDECESGI HNCLPDFICQ NTLGSFRCP KLQCKSGFIQ DALGNCIDIN ECLISAPCP IGHTCINTEG SYTCQKNVPN CGRGYHLNEE GTRCVDVDEC APPAEPCGKG HRCVNSPGSF RCECKTGYFF DGISRMCDV NEQRYPGRL CGHKCENTLG SYLCSCSVGF RLSVDGRSCE DINECSSSPC SQECANVYGS YQCYCRRGYQ LSDVDGVTC DIDECALPTG GHICSYRCIN IPGSFQCSCP SSGYRLAPNG SNCQDIDECV TGIHNCSINE TCFNIQGGFR CLAFCEPENY RRSAAATRCER LPCHENRECS KLPLRITYYH LSFPTNIQAP

Product Details

AVVFRMGPS AVPGDSMQLA ITGGNEEGFF TTRKVSPHSG VVALTKPVPE PRDLLLTVKM
DLSRHGTVSS FVAKLFIFVS AEL

Cross-Reactivity: Human

Characteristics: Antibody reactive against mammalian transfected lysate.

Target Details

Target: Fibulin 1 (FBLN1)

Alternative Name: FBLN1 ([FBLN1 Products](#))

Background: Full Gene Name: fibulin 1
Synonyms: FBLN

Gene ID: 2192

Application Details

Application Notes: Optimal working dilution should be determined by the investigator.

Restrictions: For Research Use only

Handling

Format: Liquid

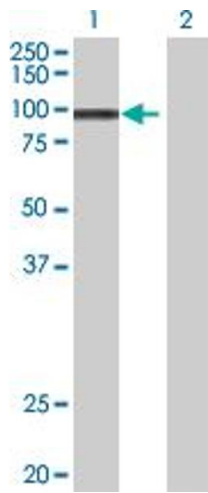
Buffer: No additive

Preservative: Without preservative

Handling Advice: Aliquot to avoid repeated freezing and thawing.

Storage: -20 °C

Storage Comment: Store at -20°C or lower. Aliquot to avoid repeated freezing and thawing.

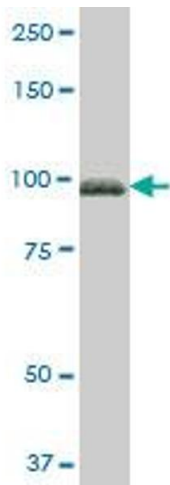


Western Blotting

Image 1. Western Blot analysis of FBLN1 expression in transfected 293T cell line by FBLN1 MaxPab polyclonal antibody.

Lane 1: FBLN1 transfected lysate(75.13 KDa).

Lane 2: Non-transfected lysate.



Western Blotting

Image 2. FBLN1 MaxPab polyclonal antibody. Western Blot analysis of FBLN1 expression in human liver.