

Datasheet for ABIN515560
anti-FCGR1A antibody (AA 16-115)**2** Images**1** Publication[Go to Product page](#)

Overview

Quantity:	100 µg
Target:	FCGR1A
Binding Specificity:	AA 16-115
Reactivity:	Human
Host:	Mouse
Clonality:	Monoclonal
Conjugate:	This FCGR1A antibody is un-conjugated
Application:	ELISA, Proximity Ligation Assay (PLA)

Product Details

Purpose:	Mouse monoclonal antibody raised against a partial recombinant FCGR1A.
Immunogen:	FCGR1A (NP_000557, 16 a.a. ~ 115 a.a) partial recombinant protein with GST tag. MW of the GST tag alone is 26 KDa.
Sequence:	QVDTTKAVIT LQPPWVSFQ EETVTLHCEV LHLPGSSSTQ WFLNGTATQT STPSYRITSA SVNDSGEYRC QRGLSGRSDP IQLEIHRGWL LLQVSSRVFT
Clone:	1D3
Isotype:	IgG2a
Cross-Reactivity:	Human
Characteristics:	Antibody Reactive Against Recombinant Protein.

Target Details

Target:	FCGR1A
Alternative Name:	FCGR1A (FCGR1A Products)
Background:	Full Gene Name: Fc fragment of IgG, high affinity Ia, receptor (CD64) Synonyms: CD64,CD64A,FCRI,FLJ18345,IGFR1
Gene ID:	2209
NCBI Accession:	NM_000566
Pathways:	Regulation of Leukocyte Mediated Immunity , Positive Regulation of Immune Effector Process

Application Details

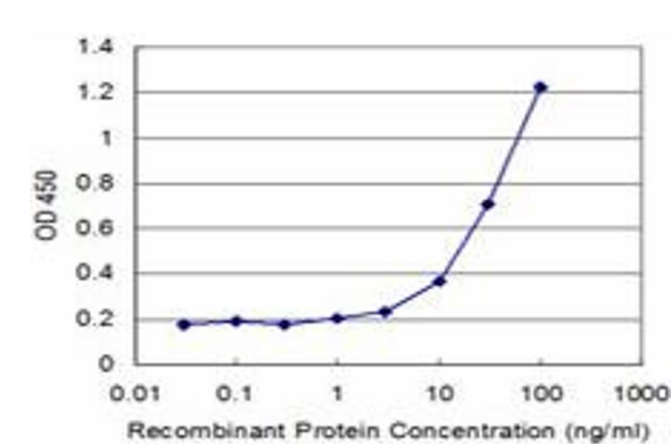
Application Notes:	Optimal working dilution should be determined by the investigator.
Restrictions:	For Research Use only

Handling

Buffer:	In 1x PBS, pH 7.4
Handling Advice:	Aliquot to avoid repeated freezing and thawing.
Storage:	-20 °C
Storage Comment:	Store at -20°C or lower. Aliquot to avoid repeated freezing and thawing.

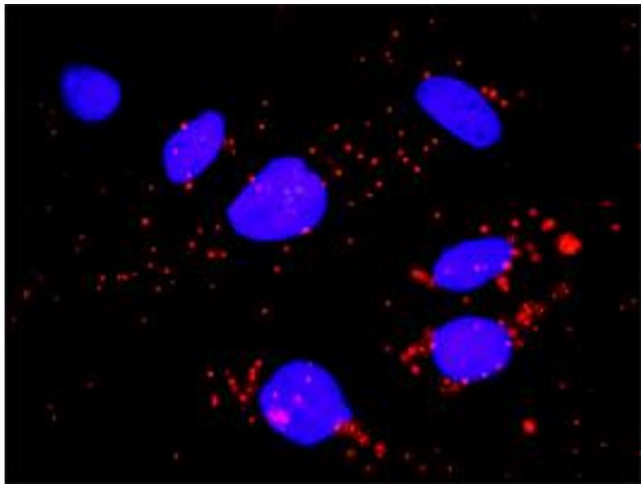
Publications

Product cited in:	Shang, Daubeuf, Triantafilou, Olden, Dépis, Raby, Herren, Dos Santos, Malinge, Dunn-Siegrist, Benmkaddem, Geinoz, Magistrelli, Rousseau, Buatois, Salgado-Pires, Reith, Monteiro, Pugin, Leger, Ferlin et al.: "Selective antibody intervention of Toll-like receptor 4 activation through Fc ? receptor tethering. ..." in: The Journal of biological chemistry , Vol. 289, Issue 22, pp. 15309-18, (2014) (PubMed).
-------------------	--



ELISA

Image 1. Detection limit for recombinant GST tagged FCGR1A is approximately 1 ng/ml as a capture antibody.



Proximity Ligation Assay

Image 2. Proximity Ligation Analysis of protein-protein interactions between FCGR3A and FCGR1A. HeLa cells were stained with anti-FCGR3A rabbit purified polyclonal 1:1200 and anti-FCGR1A mouse monoclonal antibody 1:50. Each red dot represents the detection of protein-protein interaction complex, and nuclei were counterstained with DAPI (blue).