

Datasheet for ABIN515571
anti-FCGR3A antibody (AA 1-290)

2 Images

[Go to Product page](#)

Overview

Quantity:	100 µg
Target:	FCGR3A
Binding Specificity:	AA 1-290
Reactivity:	Human
Host:	Rabbit
Clonality:	Polyclonal
Conjugate:	This FCGR3A antibody is un-conjugated
Application:	Western Blotting (WB), Proximity Ligation Assay (PLA)

Product Details

Purpose:	Rabbit polyclonal antibody raised against a full-length human FCGR3A protein.
Immunogen:	FCGR3A (AAH36723.1, 1 a.a. ~ 290 a.a) full-length human protein.
Sequence:	MGGGAGERLF TSSCLVGLVP LGLRISLVTC PLQCGIMWQL LLPTALLLLV SAGMRTE ^D L ^P KAVVFLEPQW YRVLEKDSVT LKCQGAYSPE DNSTQWFHNE SLISSQASSY FIDAATV ^D DD ^S GEYRCQTNLS T ^L SDPVQLEV HIGWLLLQAP R ^W VFKEED ^P I HLRCHSWKNT ALHKVTYLQ ^N GKGRKYFHHN SDFYIPKATL KDSGSYFCRG LVGSKNVSSE TVNITITQGL AVSTISSFF ^P PGYQVSFCLV M ^V LLFAVDTG LYFSVKT ^N IR SSTRDWKDHK FKWRKDPQ ^D K
Cross-Reactivity:	Human
Characteristics:	Antibody reactive against mammalian transfected lysate.

Target Details

Target:	FCGR3A
Alternative Name:	FCGR3A (FCGR3A Products)
Background:	Full Gene Name: Fc fragment of IgG, low affinity IIIa, receptor (CD16a) Synonyms: CD16,CD16A,FCG3,FCGR3,FCGRIII,FCR-10,FCRIII,FCRIIIA,IGFR3
Gene ID:	2214

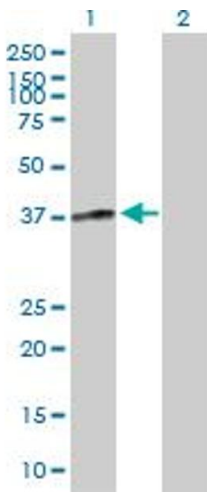
Application Details

Application Notes:	Optimal working dilution should be determined by the investigator.
Restrictions:	For Research Use only

Handling

Buffer:	In 1x PBS, pH 7.4
Handling Advice:	Aliquot to avoid repeated freezing and thawing.
Storage:	-20 °C
Storage Comment:	Store at -20°C or lower. Aliquot to avoid repeated freezing and thawing.

Images

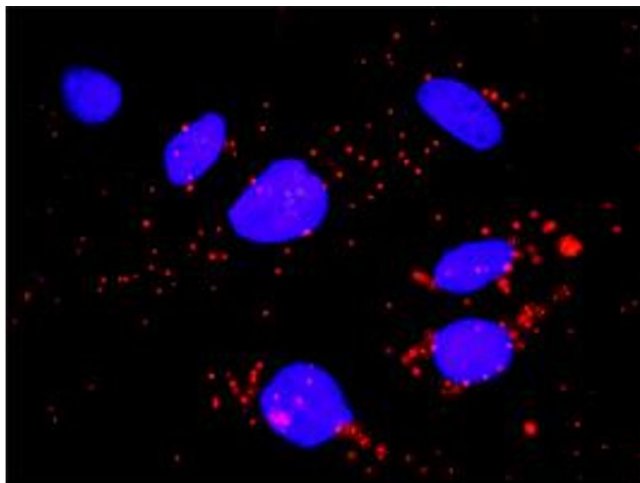


Western Blotting

Image 1. Western Blot analysis of FCGR3A expression in transfected 293T cell line by FCGR3A MaxPab polyclonal antibody.

Lane 1: FCGR3A transfected lysate(32.60 KDa).

Lane 2: Non-transfected lysate.



Proximity Ligation Assay

Image 2. Proximity Ligation Analysis of protein-protein interactions between FCGR3A and FCGR1A. HeLa cells were stained with anti-FCGR3A rabbit purified polyclonal 1:1200 and anti-FCGR1A mouse monoclonal antibody 1:50. Each red dot represents the detection of protein-protein interaction complex, and nuclei were counterstained with DAPI (blue).