



Datasheet for ABIN515596  
**anti-FEN1 antibody (AA 1-380)**



[Go to Product page](#)

3 Images

Overview

Quantity:	100 µg
Target:	FEN1
Binding Specificity:	AA 1-380
Reactivity:	Human
Host:	Rabbit
Clonality:	Polyclonal
Conjugate:	This FEN1 antibody is un-conjugated
Application:	Western Blotting (WB)

Product Details

Purpose:	Rabbit polyclonal antibody raised against a full-length human FEN1 protein.
Immunogen:	FEN1 (NP_004102.1, 1 a.a. ~ 380 a.a) full-length human protein.
Sequence:	MGIQGLAKLI ADVAPSAIRE NDIKSYFGRK VAIDASMSIY QFLIAVRQGG DVLQNEEGET TSHLMGMFYR TIRMMENGIK PVYVFDGKPP QLKSGELAKR SERRAEAEKQ LQQAQAAGAE QEVEKFTKRL VKVTKQHND ECKHLLSLMGI PYLDAPSEAE ASCAALVKAG KVYAAATEDM DCLTFGSPVL MRHLTASEAK KLPIQEFHLS RILQELGLNQ EQFVDLCILL GSDYCESIRG IGPKRAVDLI QKHKSIEEIV RRLDPNKYPV PENWHLKEAH QLFLEPEVLD PESVELKWSE PNEEELIKFM CGEKQFSEER IRSGVKRLSK SRQGSTQGRL DDFFKVTGSL SSAKRKEPEP KGSTKKKAKT GAAGKFKRGK
Cross-Reactivity:	Human, Mouse
Characteristics:	Antibody reactive against mammalian transfected lysate.

## Target Details

Target: FEN1

Alternative Name: FEN1 ([FEN1 Products](#))

Background: Full Gene Name: flap structure-specific endonuclease 1  
Synonyms: FEN-1,MF1,RAD2

Gene ID: 2237

NCBI Accession: [NM\\_004111](#)

Pathways: [Telomere Maintenance](#), [DNA Damage Repair](#), [DNA Replication](#), [Synthesis of DNA](#)

## Application Details

Application Notes: Optimal working dilution should be determined by the investigator.

Restrictions: For Research Use only

## Handling

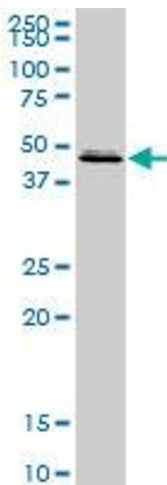
Buffer: In 1x PBS, pH 7.4

Handling Advice: Aliquot to avoid repeated freezing and thawing.

Storage: -20 °C

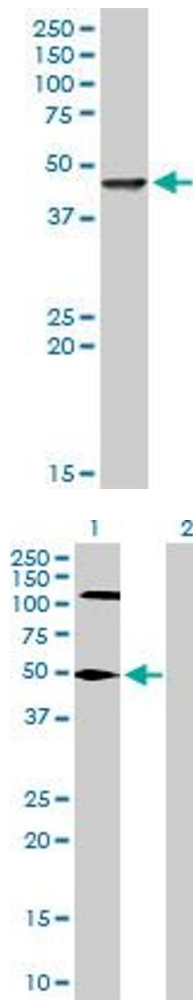
Storage Comment: Store at -20°C or lower. Aliquot to avoid repeated freezing and thawing.

## Images



### Western Blotting

**Image 1.** FEN1 MaxPab rabbit polyclonal antibody. Western Blot analysis of FEN1 expression in mouse lung.



### Western Blotting

**Image 2.** FEN1 MaxPab rabbit polyclonal antibody. Western Blot analysis of FEN1 expression in MCF-7.

### Western Blotting

**Image 3.** Western Blot analysis of FEN1 expression in transfected 293T cell line by FEN1 MaxPab polyclonal antibody.

Lane 1: FEN1 transfected lysate(42.60 KDa).

Lane 2: Non-transfected lysate.