

Datasheet for ABIN515602  
**anti-FGA antibody (AA 1-218)**

## 4 Images

[Go to Product page](#)

## Overview

Quantity:	100 µg
Target:	FGA
Binding Specificity:	AA 1-218
Reactivity:	Human
Host:	Rabbit
Clonality:	Polyclonal
Conjugate:	This FGA antibody is un-conjugated
Application:	Western Blotting (WB), Immunohistochemistry (Paraffin-embedded Sections) (IHC (p)), Proximity Ligation Assay (PLA)

## Product Details

Purpose:	Rabbit polyclonal antibody raised against a full-length human FGA protein.
Immunogen:	FGA (AAH20764.1, 1 a.a. ~ 218 a.a) full-length human protein.
Sequence:	MFSMRIVCLV LSVVGTAWTA DSGEGDLAE GGGVRGPRVV ERHQSACKDS DWPFCSGEDW NYKCPSGCRM KGLIDEVNQD FTNRINKLKN SLFEYQKNNK DSHSLTTNIM EILRGDFSSA NNRDNTYNRV SEDLRSRIEV LKRKVIEKVT ANNLLVARVT TEETPHLKAR AIKWQMRPEV KPIMKEHIAP REAMLNLALS EVSTLLLWGS LPCPPRLS
Cross-Reactivity:	Human, Mouse
Characteristics:	Antibody reactive against mammalian transfected lysate.

## Target Details

Target:	FGA
Alternative Name:	FGA ( <a href="#">FGA Products</a> )
Background:	Full Gene Name: fibrinogen alpha chain Synonyms: Fib2,MGC119422,MGC119423,MGC119425
Gene ID:	2243

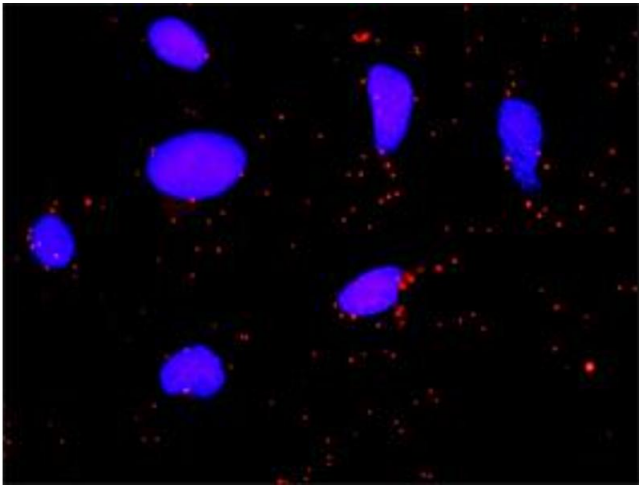
## Application Details

Application Notes:	Optimal working dilution should be determined by the investigator.
Restrictions:	For Research Use only

## Handling

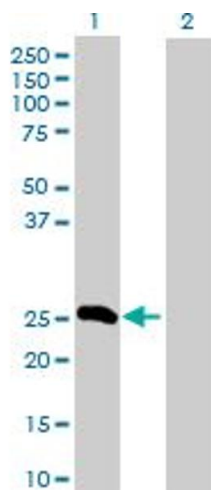
Buffer:	In 1x PBS, pH 7.4
Handling Advice:	Aliquot to avoid repeated freezing and thawing.
Storage:	-20 °C
Storage Comment:	Store at -20°C or lower. Aliquot to avoid repeated freezing and thawing.

## Images



### Proximity Ligation Assay

**Image 1.** Proximity Ligation Analysis of protein-protein interactions between FGA and F2. HeLa cells were stained with anti-FGA rabbit purified polyclonal 1:1200 and anti-F2 mouse monoclonal antibody 1:50. Each red dot represents the detection of protein-protein interaction complex, and nuclei were counterstained with DAPI (blue).

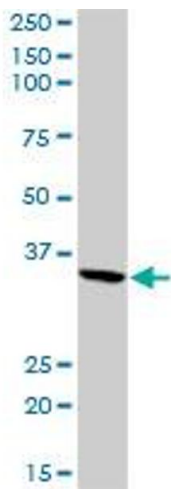


#### Western Blotting

**Image 2.** Western Blot analysis of FGA expression in transfected 293T cell line by FGA MaxPab polyclonal antibody.

Lane 1: FGA transfected lysate(24.70 kDa).

Lane 2: Non-transfected lysate.



#### Western Blotting

**Image 3.** FGA MaxPab rabbit polyclonal antibody. Western Blot analysis of FGA expression in mouse kidney.

Please check the [product details page](#) for more images. Overall 4 images are available for ABIN515602.