

Datasheet for ABIN515603  
**anti-FGA antibody (AA 1-218)**

## 5 Images

[Go to Product page](#)

## Overview

Quantity:	100 µg
Target:	FGA
Binding Specificity:	AA 1-218
Reactivity:	Human
Host:	Mouse
Clonality:	Monoclonal
Conjugate:	This FGA antibody is un-conjugated
Application:	Western Blotting (WB), ELISA, Immunoprecipitation (IP), Proximity Ligation Assay (PLA)

## Product Details

Purpose:	Mouse monoclonal antibody raised against a full-length recombinant FGA.
Immunogen:	FGA (AAH20764, 1 a.a. ~ 218 a.a) full-length recombinant protein with GST tag. MW of the GST tag alone is 26 KDa.
Sequence:	MFSMSIVCLV LSVVGTAWTA DSGEGDFLAE GGGVRGPRVV ERHQSACKDS DWPFCSGEDW NYKCPSGCRM KGLIDEVNQD FTNRINKLKN SLFEYQKNNK DSHSLTTNIM EILRGDFSSA NNRDNTYNRV SEDLRSRIEV LKRKVIEKVT ANNLLVARVT TEETPHLKAR AIKWQMRPEV KPIMKEHIAP REAMLNLALS EVSTLLLWGS LPCPPRLS
Clone:	1D12
Isotype:	IgG2a
Cross-Reactivity:	Human

## Product Details

Characteristics: Antibody Reactive Against Recombinant Protein.

## Target Details

Target:	FGA
Alternative Name:	FGA ( <a href="#">FGA Products</a> )
Background:	Full Gene Name: fibrinogen alpha chain Synonyms: Fib2,MGC119422,MGC119423,MGC119425
Gene ID:	2243

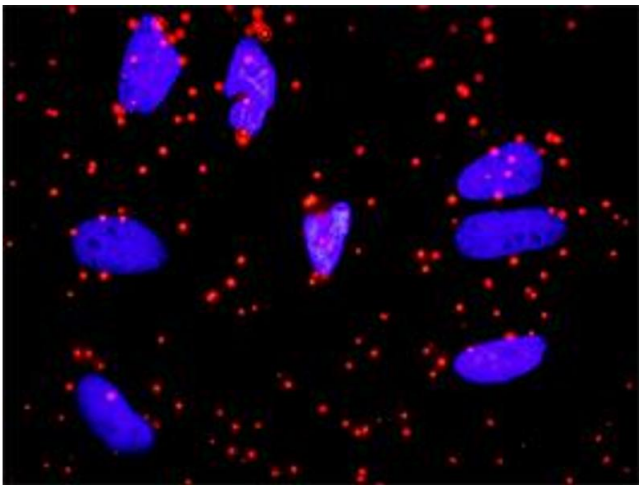
## Application Details

Application Notes:	Optimal working dilution should be determined by the investigator.
Restrictions:	For Research Use only

## Handling

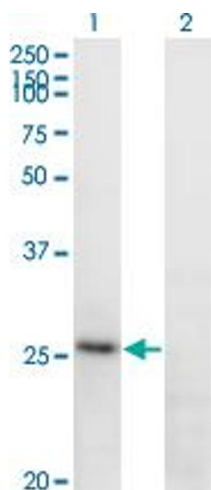
Buffer:	In 1x PBS, pH 7.4
Handling Advice:	Aliquot to avoid repeated freezing and thawing.
Storage:	-20 °C
Storage Comment:	Store at -20°C or lower. Aliquot to avoid repeated freezing and thawing.

## Images



### Proximity Ligation Assay

**Image 1.** Proximity Ligation Analysis of protein-protein interactions between APOA1 and FGA. HeLa cells were stained with anti-APOA1 rabbit purified polyclonal 1:1200 and anti-FGA mouse monoclonal antibody 1:50. Each red dot represents the detection of protein-protein interaction complex, and nuclei were counterstained with DAPI (blue).

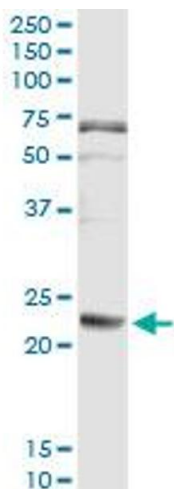


### Western Blotting

**Image 2.** Western Blot analysis of FGA expression in transfected 293T cell line by FGA monoclonal antibody (M01), clone 1D12.

Lane 1: FGA transfected lysate(24.7 KDa).

Lane 2: Non-transfected lysate.



### Immunoprecipitation

**Image 3.** Immunoprecipitation of FGA transfected lysate using anti-FGA monoclonal antibody and Protein A Magnetic Bead , and immunoblotted with FGA MaxPab rabbit polyclonal antibody.

Please check the [product details page](#) for more images. Overall 5 images are available for ABIN515603.