



Datasheet for ABIN515607  
**anti-FGF1 antibody (AA 1-155)**



[Go to Product page](#)

3 Images

Overview

Quantity:	100 µg
Target:	FGF1
Binding Specificity:	AA 1-155
Reactivity:	Human
Host:	Rabbit
Clonality:	Polyclonal
Conjugate:	This FGF1 antibody is un-conjugated
Application:	Western Blotting (WB), Proximity Ligation Assay (PLA)

Product Details

Purpose:	Rabbit polyclonal antibody raised against a full-length human FGF1 protein.
Immunogen:	FGF1 (NP_000791.1, 1 a.a. ~ 155 a.a) full-length human protein.
Sequence:	MAEGEITTFT ALTEKFNLPP GNYKKPKLLY CSNGGHFLRI LPDGTVDGTR DRSDQHIQLQ LSAESVGEVY IKSTETGQYL AMDTDGLLYG SQTPNEECLF LERLEENHYN TYISKKHAEK NWFVGLKKNNG SCKRGPRTY GQKAILFLPL PVSSD
Cross-Reactivity:	Human
Characteristics:	Antibody reactive against mammalian transfected lysate.

Target Details

Target:	FGF1
---------	------

## Target Details

Alternative Name:	FGF1 ( <a href="#">FGF1 Products</a> )
Background:	Full Gene Name: fibroblast growth factor 1 (acidic) Synonyms: AFGF, ECGF, ECGF-beta, ECGFA, ECGFB, FGF-alpha, FGFA, GLIO703, HBGF1
Gene ID:	2246
NCBI Accession:	<a href="#">NM_000800</a>
Pathways:	<a href="#">RTK Signaling</a> , <a href="#">Fc-epsilon Receptor Signaling Pathway</a> , <a href="#">EGFR Signaling Pathway</a> , <a href="#">Neurotrophin Signaling Pathway</a>

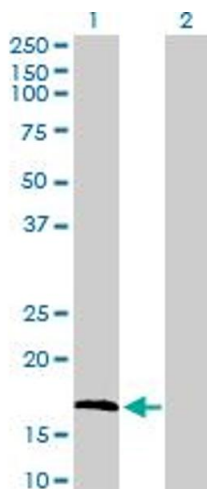
## Application Details

Application Notes:	Optimal working dilution should be determined by the investigator.
Restrictions:	For Research Use only

## Handling

Buffer:	In 1x PBS, pH 7.4
Handling Advice:	Aliquot to avoid repeated freezing and thawing.
Storage:	-20 °C
Storage Comment:	Store at -20°C or lower. Aliquot to avoid repeated freezing and thawing.

## Images

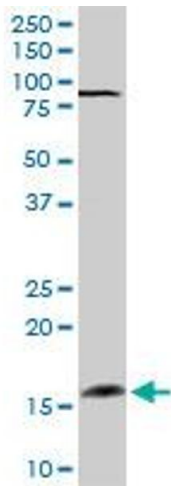


### Western Blotting

**Image 1.** Western Blot analysis of FGF1 expression in transfected 293T cell line by FGF1 MaxPab polyclonal antibody.

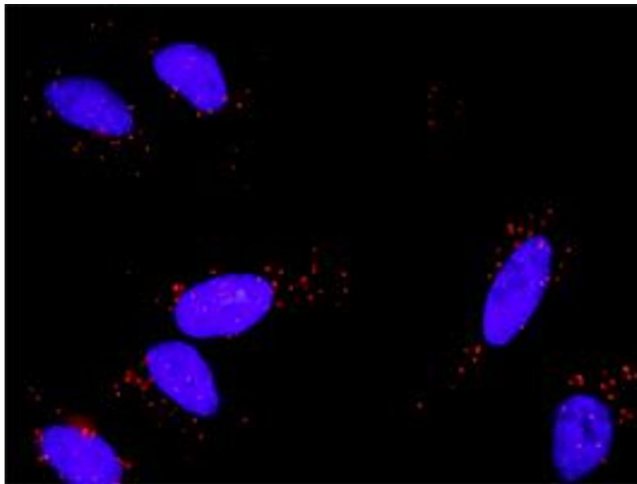
Lane 1: FGF1 transfected lysate(17.50 KDa).

Lane 2: Non-transfected lysate.



### Western Blotting

**Image 2.** FGF1 MaxPab rabbit polyclonal antibody. Western Blot analysis of FGF1 expression in human placenta.



### Proximity Ligation Assay

**Image 3.** Proximity Ligation Analysis of protein-protein interactions between FGF1 and FGFR1. HeLa cells were stained with anti-FGF1 rabbit purified polyclonal 1:1200 and anti-FGFR1 mouse monoclonal antibody 1:50. Each red dot represents the detection of protein-protein interaction complex, and nuclei were counterstained with DAPI (blue).