

Datasheet for ABIN515617
anti-FGF8 antibody (AA 65-133)

2 Images

[Go to Product page](#)

Overview

Quantity:	100 µg
Target:	FGF8
Binding Specificity:	AA 65-133
Reactivity:	Human
Host:	Mouse
Clonality:	Monoclonal
Conjugate:	This FGF8 antibody is un-conjugated
Application:	ELISA, Proximity Ligation Assay (PLA)

Product Details

Purpose:	Mouse monoclonal antibody raised against a full length recombinant FGF8.
Immunogen:	FGF8 (NP_149354, 65 a.a. ~ 133 a.a) full length recombinant protein with GST tag. MW of the GST tag alone is 26 KDa.
Sequence:	SRRLIRTYQL YSRTSGKHHVQ VLANKRINAM AEDGDPFAKL IVETDTFGSR VRVGAETGL YICMNKKKGK
Clone:	2A11
Isotype:	IgG2a
Cross-Reactivity:	Human
Characteristics:	Antibody Reactive Against Recombinant Protein.

Target Details

Target:	FGF8
Alternative Name:	FGF8 (FGF8 Products)
Background:	Full Gene Name: fibroblast growth factor 8 (androgen-induced) Synonyms: AIGF,HBGF-8,MGC149376
Gene ID:	2253
NCBI Accession:	NM_033164
Pathways:	RTK Signaling , Fc-epsilon Receptor Signaling Pathway , EGFR Signaling Pathway , Neurotrophin Signaling Pathway , Dopaminergic Neurogenesis

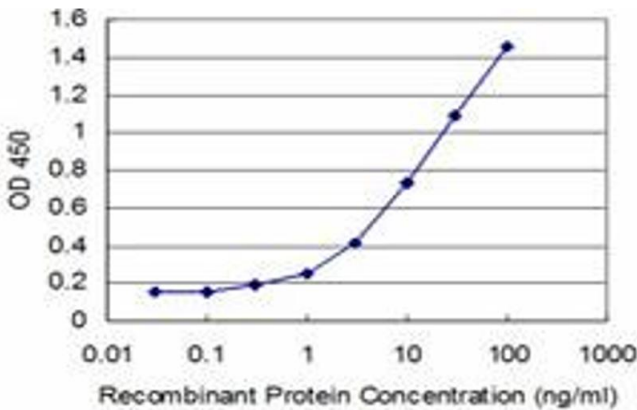
Application Details

Application Notes:	Optimal working dilution should be determined by the investigator.
Restrictions:	For Research Use only

Handling

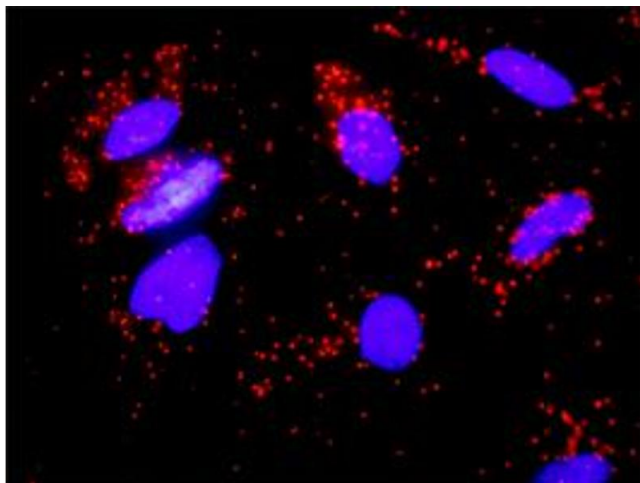
Buffer:	In 1x PBS, pH 7.4
Handling Advice:	Aliquot to avoid repeated freezing and thawing.
Storage:	-20 °C
Storage Comment:	Store at -20°C or lower. Aliquot to avoid repeated freezing and thawing.

Images



ELISA

Image 1. Detection limit for recombinant GST tagged FGF8 is approximately 0.3ng/ml as a capture antibody.



Proximity Ligation Assay

Image 2. Proximity Ligation Analysis of protein-protein interactions between FGFR2 and FGF8. HeLa cells were stained with anti-FGFR2 rabbit purified polyclonal 1:1200 and anti-FGF8 mouse monoclonal antibody 1:50. Each red dot represents the detection of protein-protein interaction complex, and nuclei were counterstained with DAPI (blue).